

SUZUKI
パーツカタログ

JR50

(LN1JA13A)

JR50N

JR50P

JR50R

1993-10

3版

このパーツカタログの発行により次のパーツカタログは
使用しないでください。

パーツカタログ名	パーツカタログ品番
JR50 (N/P)	9900B - 50054 - 010

ま え が き
目 次

1

エ ン ジ ン
トランスミッション

2

電 装

3

車 体

4

品 番 索 引 表
品 名 索 引 表

5

JR50N



JR50P
JR50R



PHOTO : JR50P

まえがき

このパーツカタログは、スズキ JR50N型、JR50P型、JR50R型 の補給取扱い部品を収録してあります。

実施号機

JR50N : F.No.LN1JA13A N1100001~
 JR50P : F.No.LN1JA13A P1100001~
 JR50R : F.No.LN1JA13A R1100001~

パーツカタログのご使用について

1. 記号および略語

1-1. サイズ等

A : 用品	L : 長さ、リンク数、容積	US : アンゲサイズ
AR : 必要量	NT : 歯数	W : 巾
D : 線径	OD : 外径	W/ : 同時使用
E.No. : エンジン番号	OPT : オプション	# : 直送品
F.No. : フレーム番号	OS : オーバサイズ	* : 直売品
H : 高さ	STD : スタンダード	~ : より、から
ID : 内径	T : 厚さ	

12×34×5 : 内径×外径×厚さ(巾、長さ)

1-2. メーカー名

BS : ブリヂストンタイヤ	ND : 日本電装
CHKK : 中央発条	NGK : 日本特殊陶業
DID : 大同工業	NHK : 日本発条
DK : 大金製作所	RK : 高砂チェン
FB : 古河電池	TEN : 富士通テン
IRC : 井上護謨工業	TR : 東海理化電機製作所
KYB : 萱場工業	YB : 湯浅電池

NABCO : 日本エアブレーキ

1-3. 構成部品の表示

品 番	品 名
×××××-×××××	○○○アッシ
×××××-×××××	・○○○○
×××××-×××××	・○○○○

↑ 構成部品(インナパーツ)を示します。

1-4. 部品変更

備考欄の品番の前の→印は変更部品相互の互換性を表示します。
 ←○○○○○-○○○○○……「~より統一」を示し、旧←→新です。
 →○○○○○-○○○○○……「~に統一」を示し、旧←→新です。

1-5. 修正使用

ホース、チューブ等で寸法表示の→印は修正使用を表示します。
 (例) L : 200→180……200を180に修正して使用します。

2. 部品変更のお知らせ

- 2-1. 部品が新設、変更または廃止となった場合、随時改訂しますから改訂版をご使用ください。販売店にあっては、弊社代理店にお問い合わせください。
- 2-2. 改訂版マイクロフィルムでは、品番、個数、備考欄の変更および新設の場合、○印を表示してあります。

(例) 2-1 ○ 1 1 1 0 0 - 4 4 8 1 0

↑ 部品変更マーク

3. 部品の注文

部品ご注文の場合は、このパーツカタログをご参照の上、次の点にご留意され、正確にご注文ください。

- 3-1. 品番、品名および数量
- 3-2. フレーム番号およびエンジン番号と型式番号(年式)
- 3-3. 部品メーカー(電装部品、保安部品など)

4. 価 格

品番索引表の記載価格は、メーカー希望小売価格(税抜き)です。消費税は別途申し受けますので、ご了承ください。

- 注※ 分解図は、補給部品索引のためのものです。組立仕様書としてご使用にならないでください。
- ※ 補給部品の中で車種間の共通化により、一部生産車の部品と異なる場合があります。あらかじめご了承ください。
 - ※ 記載事項は予告なく変更することがあります。あらかじめご了承ください。

FIG. 9

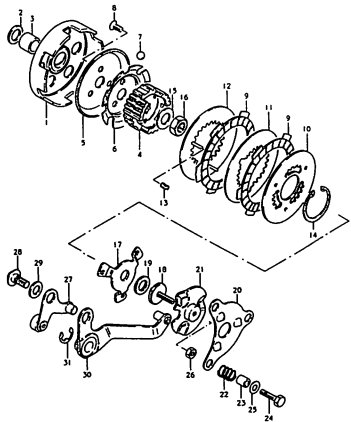


FIG. 10

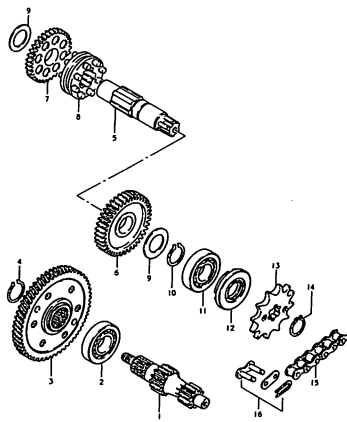


FIG. 11

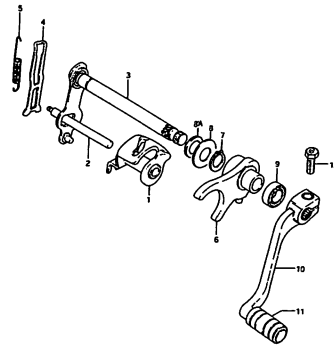


FIG. 12

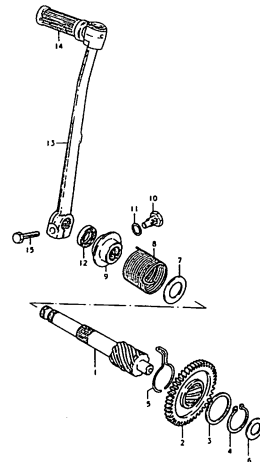


FIG. 13

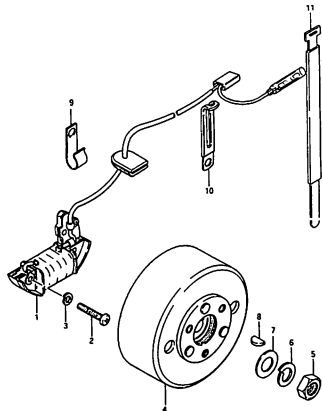


FIG. 14

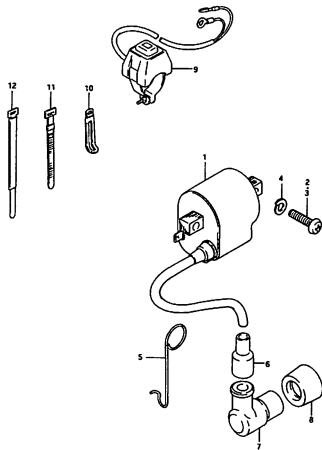


FIG. 15

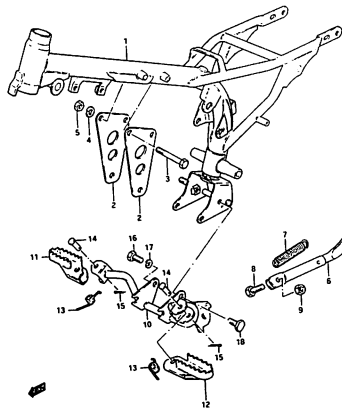


FIG. 16

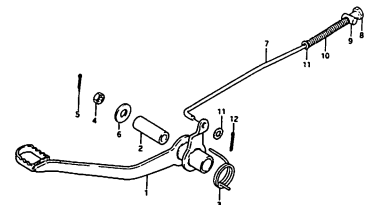


FIG. 17

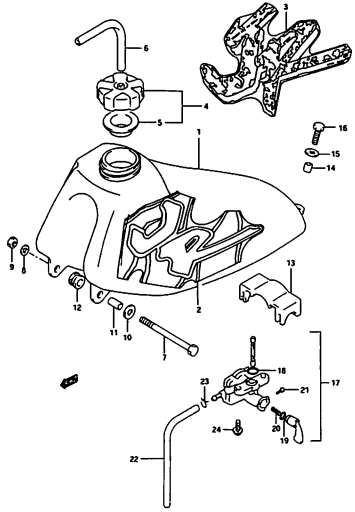


FIG. 17 A

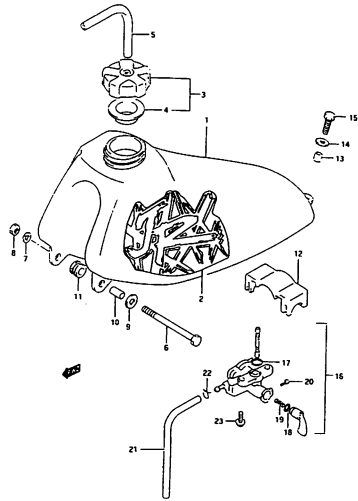


FIG. 18

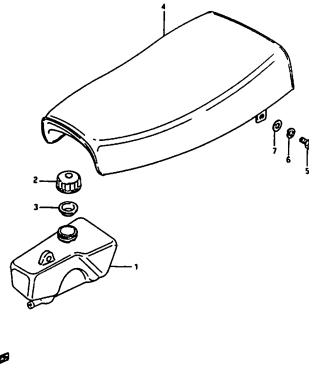


FIG. 19

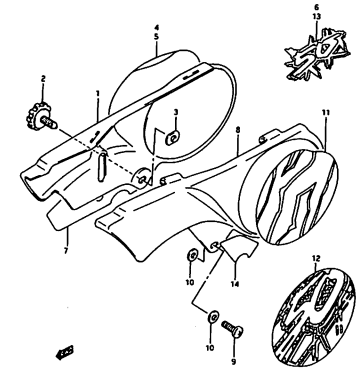


FIG. 20

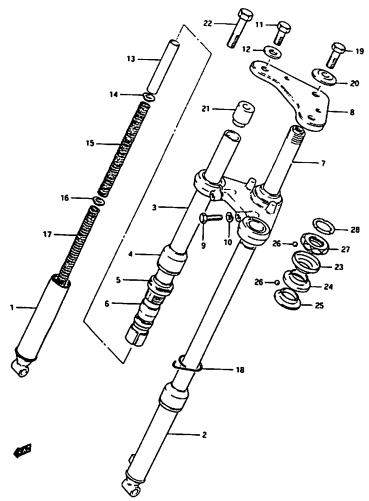


FIG. 21

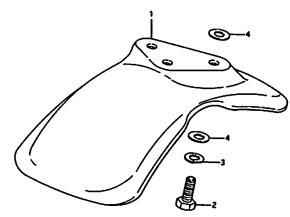


FIG. 22

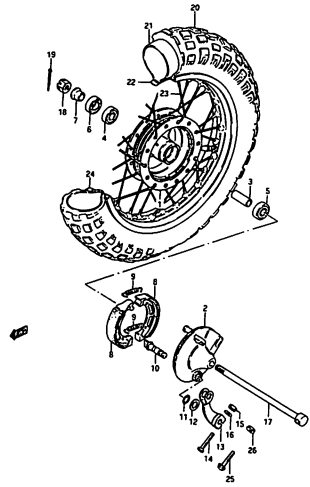


FIG. 23

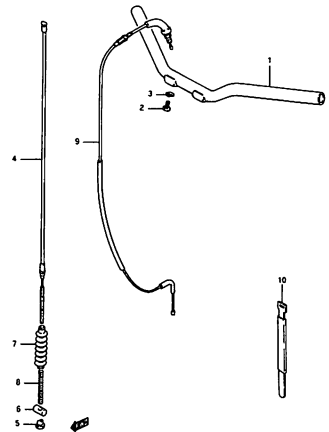


FIG. 24

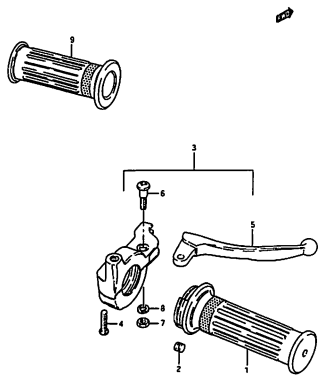


FIG. 25

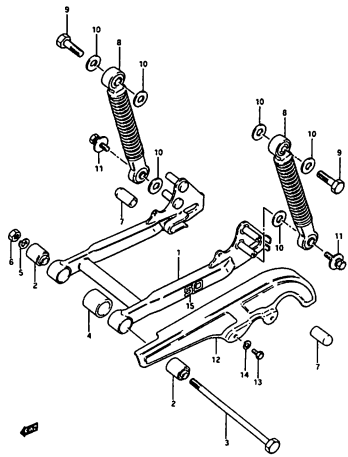


FIG. 26

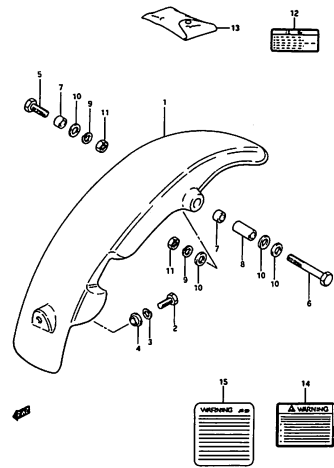


FIG. 27

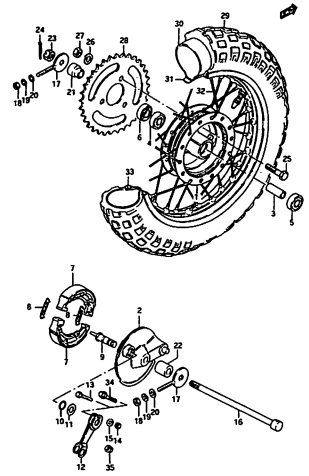


FIG. 28

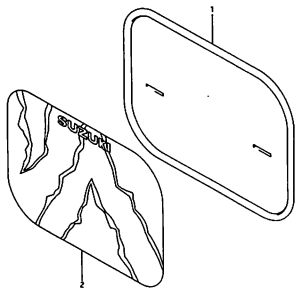


FIG.1

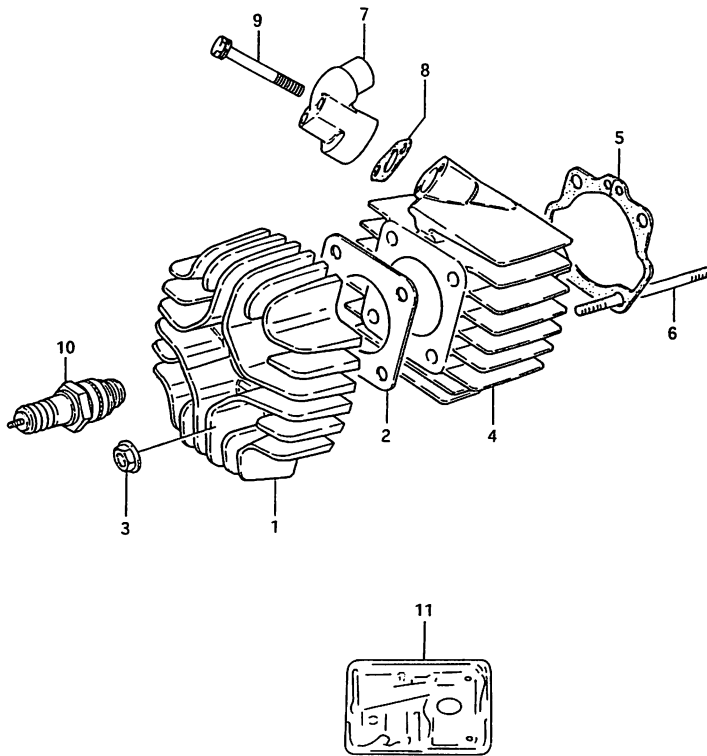


FIG.1 (B- 2) CYLINDER

REF.NO.	PART NO.	DESCRIPTION	Q'TY	REMARKS
1	11111-04001	HEAD, cylinder	1	
2	11141-04000	GASKET, cylinder head	1	
3-1	09159-06017	NUT	4	model N/P
3-2	08316-10063	NUT	4	model R
4	11211-04001	CYLINDER	1	
5	11241-04010	GASKET, cylinder (NA)	1	
6	09108-06108	STUD BOLT	4	
7	13111-04001	PIPE, intake	1	
8	13121-04000-H17	GASKET, intake pipe	1	+13121-04000
9-1	01570-06457	BOLT	2	model N/P
9-2	01570-06453	BOLT	2	model R
10-1	09482-00290	SPARK PLUG (NGK,BP4H)	1	model N/P
10-2	09482-00138	SPARK PLUG (ND,W14FP)	1	model N/P
10-3	09482-00205	SPARK PLUG (NGK,BPR4HS)	1	model R
10-4	09482-00206	SPARK PLUG (ND,W14FPR-UL)	1	model R
11	11401-04811	GASKET SET	1	OPT

FIG.2

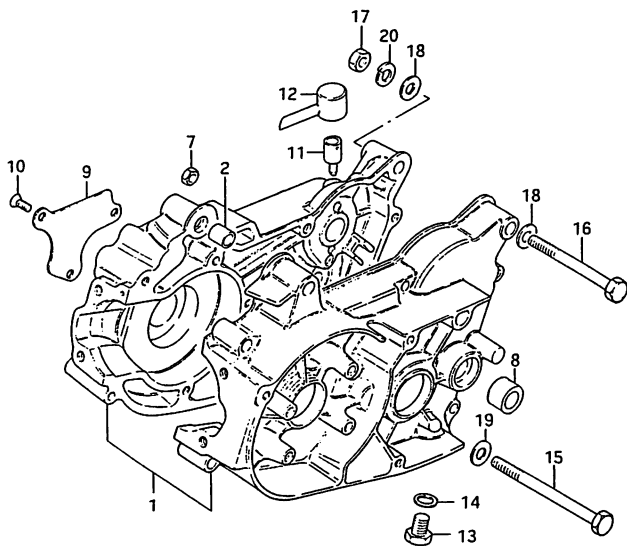
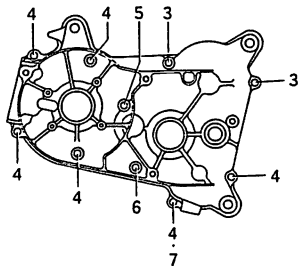


FIG.2 (B- 3) CRANKCASE

REF.NO.	PART NO.	DESCRIPTION	Q'TY	REMARKS
1	11300-04840	CRANKCASE SET	1	
2	04211-11129	.PIN	2	
3-1	02112-06307	.SCREW (6x30)	2	model N/P
3-2	02112-06303	.SCREW (6x30)	2	model R
4-1	02112-06357	.SCREW (6x35)	6	model N/P
4-2	02112-06353	.SCREW (6x35)	6	model R
5-1	02112-06407	.SCREW (6x40)	1	model N/P
5-2	02112-06403	.SCREW (6x40)	1	model R
6-1	02112-06557	.SCREW (6x55)	1	model N/P
6-2	02112-06553	.SCREW (6x55)	1	model R
7-1	08310-00067	.NUT	1	model N/P
7-2	08310-00063	.NUT	1	model R
8	09304-10005	.BUSH, counter shaft	1	
9	12521-04000	PLATE, oil reservoir	1	
10-1	02122-04108	SCREW (4x10)	3	model N/P
10-2	02122-04103	SCREW (4x10)	3	model R
11	24821-09001	PLUG, breather	1	
12	24822-20000	CAP, breather plug	1	
13	09247-10001	PLUG, oil drain	1	
14	09168-10002	GASKET	1	
15-1	01107-08858	BOLT	1	model N/P
15-2	01500-08853	BOLT	1	model R
16-1	01107-08708	BOLT	2	model N/P
16-2	01500-08703	BOLT	2	model R
17-1	08310-00087	NUT	3	model N/P
17-2	08310-00083	NUT	3	model R
18-1	08322-11087	WASHER	4	model N/P
18-2	08322-01083	WASHER	4	model R
19-1	09160-08030	WASHER	2	model N/P
19-2	09160-08080	WASHER	2	model R
20-1	08321-01087	LOCK WASHER	3	model N/P
20-2	08321-01083	LOCK WASHER	3	model R

FIG.3

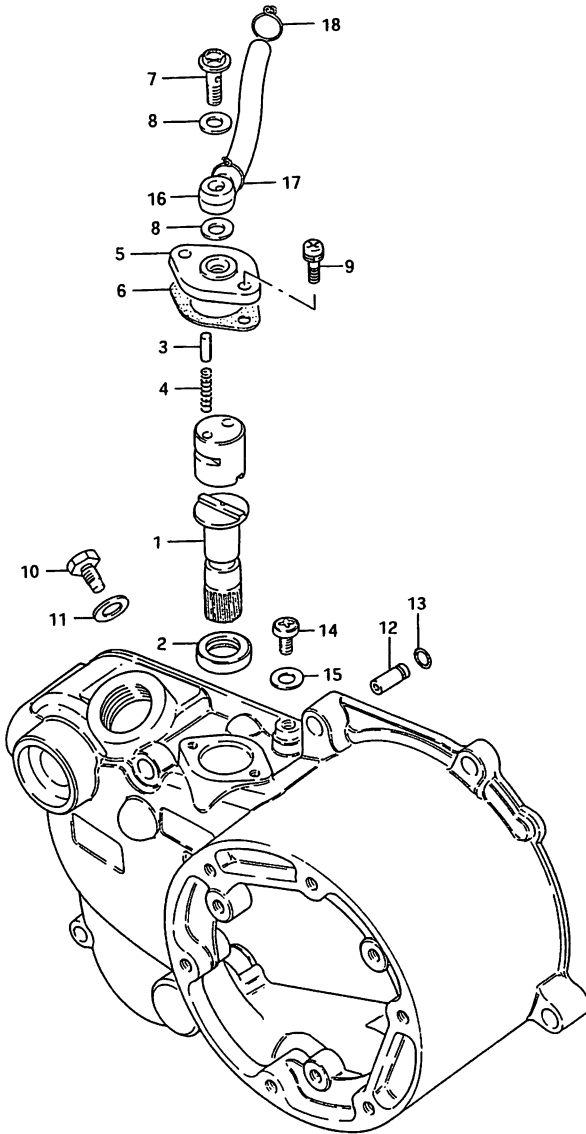


FIG.3 (B- 4) CLUTCH COVER - OIL PUMP

REF.NO.	PART NO.	DESCRIPTION	Q'TY	REMARKS
	11300-04852	COVER SET, clutch	1	Inc. clutch cover
1	16161-04000	.GEAR, oil pump drive	1	NT:23
2	09284-12004	.OIL SEAL (12x18.5x3)	1	
3	09261-02006	.PLUNGER, sub	1	
4	09440-01001	.SPRING	1	
5	16251-04000	.CAM, oil pump	1	
6	16731-04000-H17	.GASKET, oil pump	2	+16731-04000
7	09360-06003	.UNION BOLT	1	
8	09168-06004	.GASKET	2	
9	02112-34123	.SCREW	2	
10	09135-06007	.STOPPER	1	
11	09164-06003	.GASKET	1	
12	16710-04010	.CHECK VALVE	1	
13	09280-03003	.O RING	1	
14	02112-05083	.SCREW	1	
15	09168-05001	.GASKET	1	
16	16810-39100	.HOSE, oil (L:327+97)	1	
17	09401-08401	..CLIP	1	
18	09401-08401	CLIP	1	

2

FIG.4

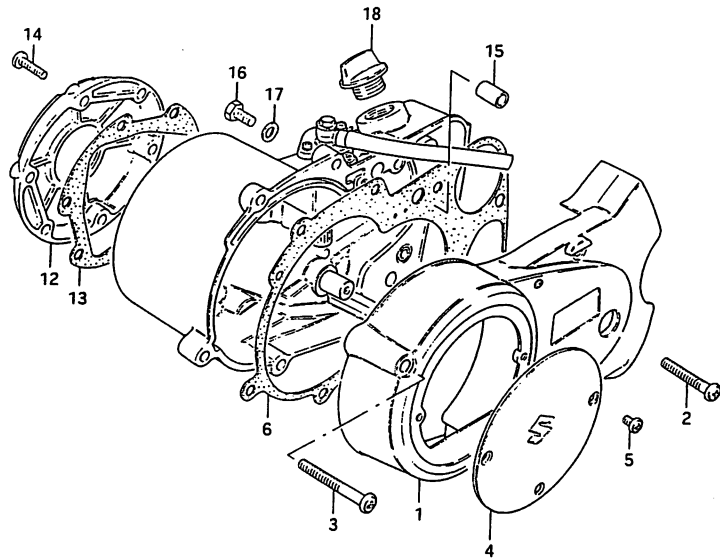
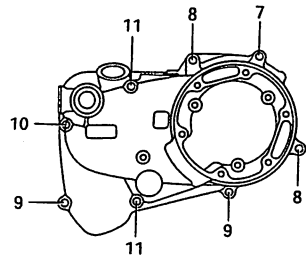


FIG.4 (B- 5) CRANKCASE COVER

REF.NO.	PART NO.	DESCRIPTION	Q'TY	REMARKS
1	11351-04400	COVER, magneto	1	
2-1	02112-06355	SCREW (6x35)	2	model N/P
2-2	02112-06353	SCREW (6x35)	2	model R
3-1	02112-06455	SCREW (6x45)	1	model N/P
3-2	02112-06453	SCREW (6x45)	1	model R
4	11381-04400	CAP, magneto inspection	1	
5-1	02112-04065	SCREW (4x6)	2	model N/P
5-2	02112-04063	SCREW (4x6)	2	model R
6	11482-04010	GASKET, clutch cover (NA)	1	
7-1	02112-06205	SCREW (6x20)	1	model N/P
7-2	02112-06203	SCREW (6x20)	1	model R
8-1	02112-06255	SCREW (6x25)	2	model N/P
8-2	02112-06253	SCREW (6x25)	2	model R
9-1	02112-06305	SCREW (6x30)	2	model N/P
9-2	02112-06303	SCREW (6x30)	2	model R
10-1	02112-06455	SCREW (6x45)	1	model N/P
10-2	02112-06453	SCREW (6x45)	1	model R
11-1	02112-06504	SCREW (6x50)	2	model N/P
11-2	02112-06503	SCREW (6x50)	2	model R
12	11387-04400	CAP, clutch release	1	
13	11495-04410	GASKET, release cap	1	←11495-04400
14-1	02112-06205	SCREW (6x20)	6	model N/P
14-2	02112-06203	SCREW (6x20)	6	model R
15	04211-09129	PIN	2	
16-1	09128-06004	SCREW, oil level	1	model N/P
16-2	09128-06044	SCREW, oil level	1	model R
17	09168-06001	GASKET	1	
18	09200-20810	PLUG, oil filler	1	

FIG.5

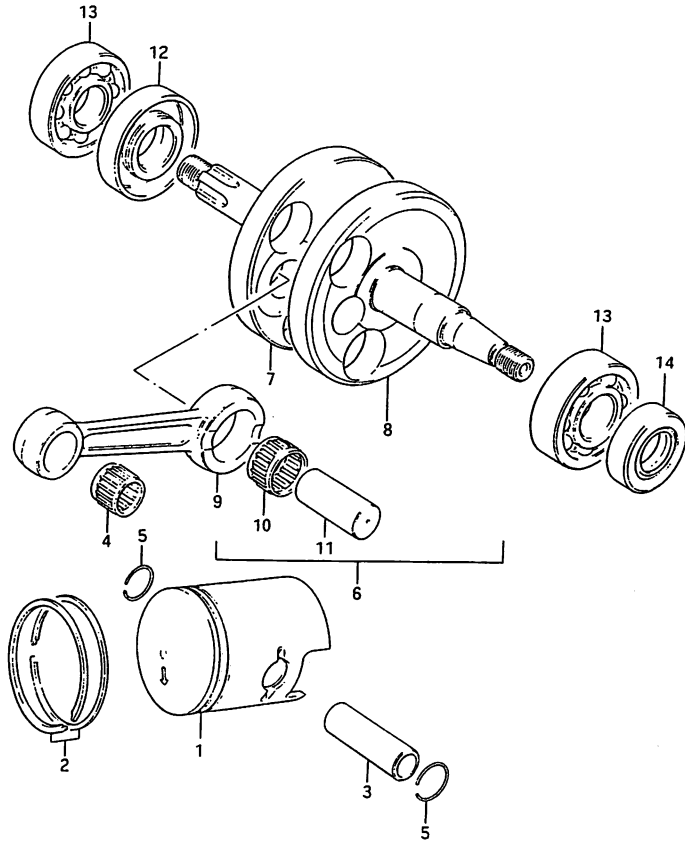


FIG.5 (B- 6) CRANKSHAFT

REF.NO.	PART NO.	DESCRIPTION	Q'TY	REMARKS
1-1	12110-43000	PISTON (STD)	1	
1-2	12110-43000-050	PISTON (OS:0.5)	1	OPT
1-3	12110-43000-100	PISTON (OS:1.0)	1	OPT
2-1	12140-16B10	RING SET, piston (STD)	1	
2-2	12140-46110-050	RING SET, piston (OS:0.5)	1	OPT
2-3	12140-46110-100	RING SET, piston (OS:1.0)	1	OPT
3	12151-04700	PIN, piston	1	
4	09263-12020	BEARING, piston pin	1	
5	09381-12001	CIRCLIP	2	
6	12200-04401	CRANKSHAFT ASSY	1	
7	12221-04400	.CRANKSHAFT, RH	1	
8	12261-04000	.CRANKSHAFT, LH	1	
9	12161-04001	.ROD, connecting	1	
10	09263-15014	.BEARING	1	
11	12211-04000	.PIN, crank	1	
12	09283-22001	OIL SEAL, RH (22x40x8)	1	
13	09262-17023	BEARING (17x40x12)	2	
14	09283-17010	OIL SEAL, LH (17x29x7)	1	

FIG.6

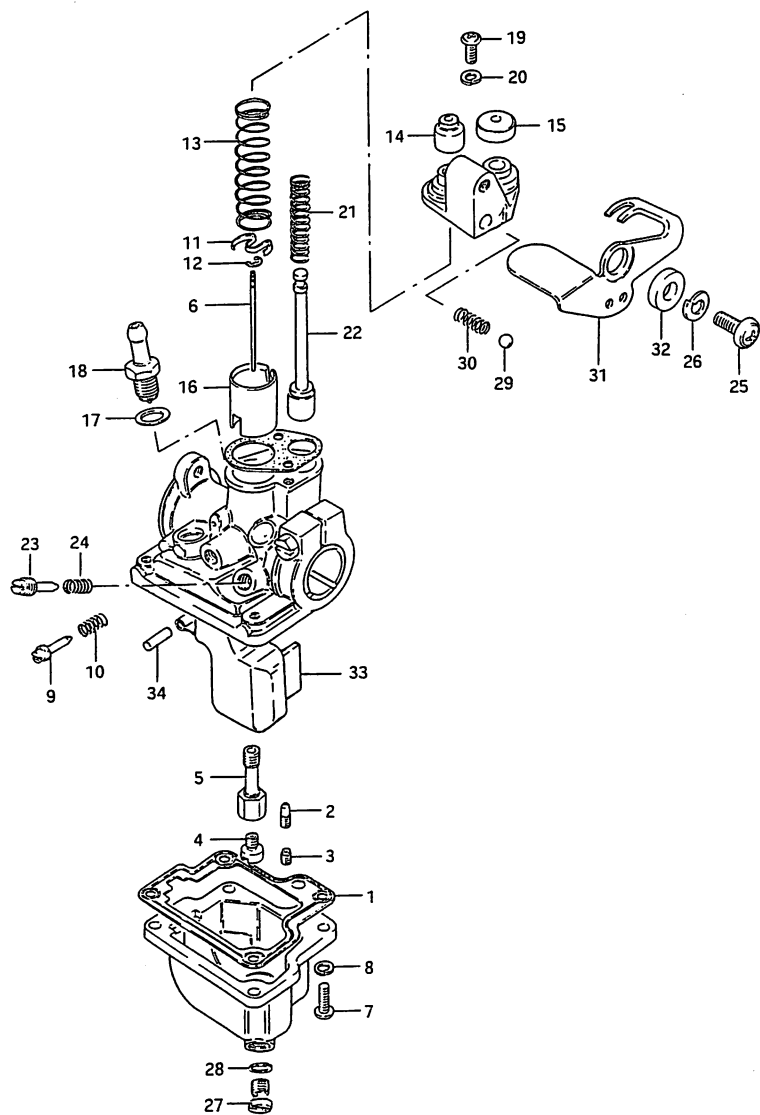


FIG.6 (B- 7) CARBURETOR

REF.NO.	PART NO.	DESCRIPTION	Q'TY	REMARKS
	13200-04410	CARBURETOR ASSY	1	
1	13251-04110	.GASKET, float chamber	1	
2	09492-15002	.JET, pilot No.1 (15)	1	
3	09492-15009	.JET, pilot No.2	1	
4	09491-52002	.JET, main (52.5)	1	
5	09494-00210	.JET, needle (E-4)	1	
6	13383-19010	.NEEDLE, jet (3E3-3)	1	
7	02112-04126	.SCREW	4	
8	08321-21046	.LOCK WASHER	4	
9	13267-01010	.SCREW, throttle stop	1	
10	13268-01010	.SPRING, stop screw	1	
11	13581-04010	.SEAT, throttle valve spring	1	
12	13394-40D00	.CLIP, needle	1	
13	13573-01010	.SPRING, throttle valve	1	
14	13681-04010	.CAP	1	
15	13682-98010	.CAP, starter	1	
16	13551-04110	.VALVE, throttle (CA:3.0)	1	
17	13663-31010	.GASKET, valve seat	1	
18	13370-04110	.VALVE, needle	1	
19	02112-04106	.SCREW	2	
20	08321-21046	.LOCK WASHER	2	
21	13417-18630	.SPRING, starter valve	1	
22	13411-04410	.VALVE, starter	1	
23	13269-04010	.SCREW, pilot air	1	
24	13268-01010	.SPRING	1	
25	02112-06126	.SCREW	1	
26	08321-21066	.LOCK WASHER	1	
27	13247-05010	.PLUG, drain	1	
28	13249-05010	.GASKET, drain plug	1	
29	13435-33110	.BALL	1	
30	13434-30650	.SPRING	1	
31	13413-04410	.LEVER, starter	1	
32	13424-30650	.RING	1	
33	13252-04011	.FLOAT	1	
34	13254-04010	.PIN, float	1	

JR50R

FIG.7

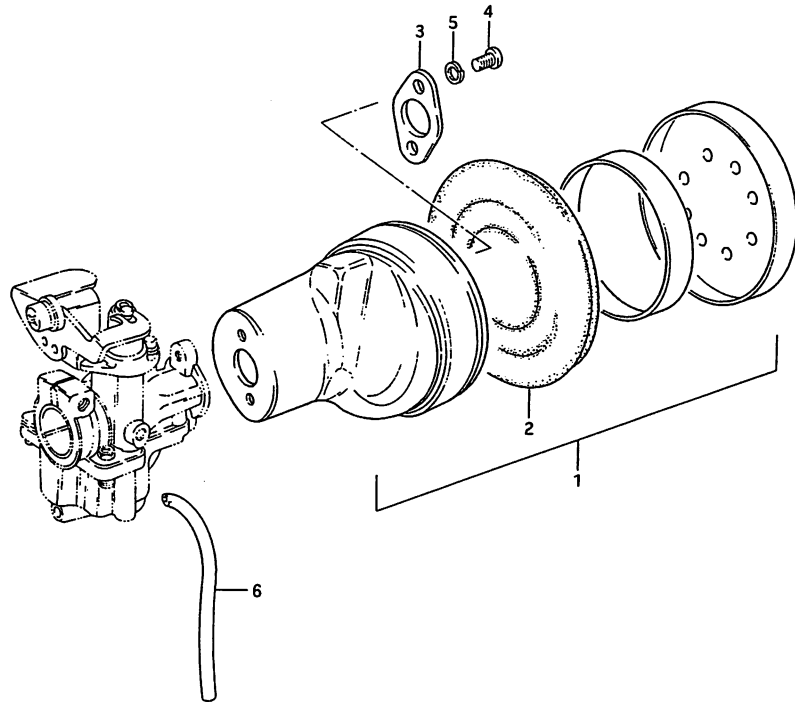


FIG.7 (B- 8) AIR CLEANER

REF.NO.	PART NO.	DESCRIPTION	Q'TY	REMARKS
1	13700-04400	CLEANER ASSY, air	1	
2	13781-04400	.FILTER	1	
3	13883-04400	PLATE	1	
4-1	02112-05107	SCREW	2	model N/P
4-2	02112-05103	SCREW	2	model R
5-1	08321-21057	LOCK WASHER	2	model N/P
5-2	08321-01053	LOCK WASHER	2	model R
6	09352-30503-300	HOSE, carburetor over flow	1	L:300+270

FIG. 8

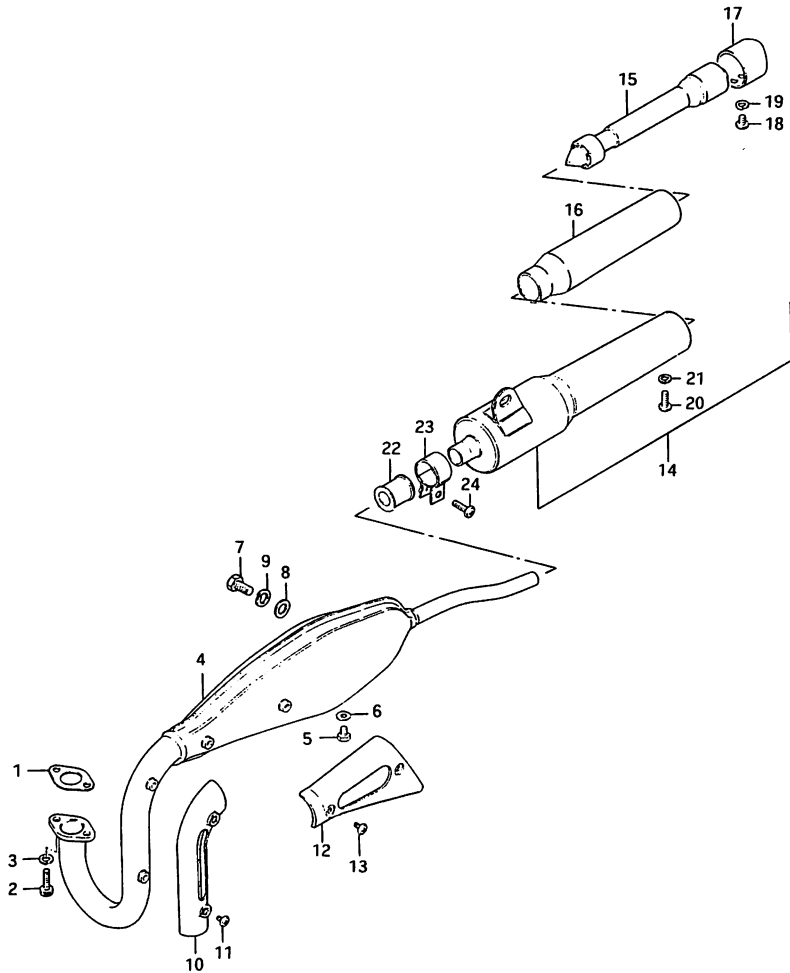
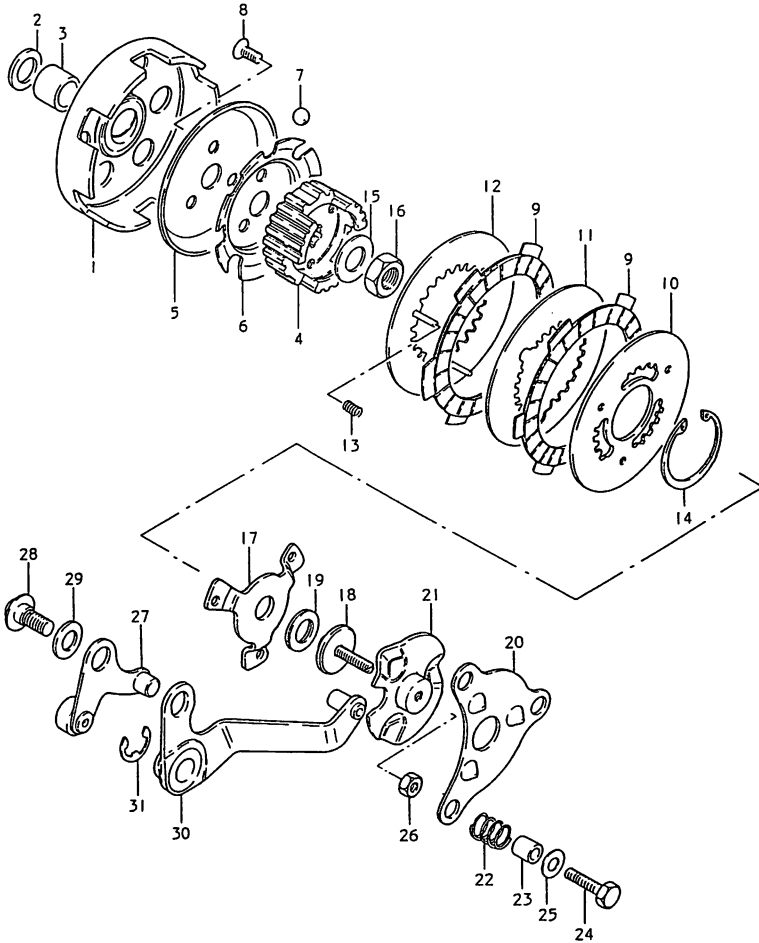


FIG. 8 (B- 9) MUFFLER

REF.NO.	PART NO.	DESCRIPTION	Q'TY	REMARKS
1	14181-04200	GASKET, exhaust pipe	1	
2	07110-06167	BOLT	2	
3	08321-21067	LOCK WASHER	2	
4	14301-04412-H01	MUFFLER ASSY	1	
5	01107-06107	.BOLT, drain plug	1	
6	08322-21067	.WASHER	1	
7	01107-08167	BOLT	1	
8	09160-08010	WASHER	1	
9	08321-21088	LOCK WASHER	1	
10	14186-04410	COVER, exhaust pipe	1	
11-1	02112-05068	SCREW	2	model N/P
11-2	09125-05121	SCREW	2	model R
12	14781-04410	COVER, muffler	1	
13-1	02112-05068	SCREW	2	model N/P
13-2	09125-05121	SCREW	2	model R
14	14303-04412-H01	MUFFLER ASSY, 2nd	1	
15	14850-30602	.TUBE, clean out	1	
16	14815-46600	.SHELL, arrester	1	
17	14817-04410	.CUTTER, muffler tail	1	
18	02112-06087	.SCREW	1	
19	08321-21067	.LOCK WASHER	1	
20	02112-06167	.SCREW	1	
21	08321-21067	.LOCK WASHER	1	
22	14771-04410	CONNECTOR, muffler	1	
23	09402-22601	CLAMP	1	
24	02112-06167	SCREW	1	

FIG. 9

FIG.9 (C- 2) CLUTCH



REF.NO.	PART NO.	DESCRIPTION	Q'TY	REMARKS
1	21110-04400	GEAR, primary drive (NT:20)	1	
2	09160-14012	WASHER (14x24x3)	1	
3	09180-14003	SPACER (14x19x18)	1	
4	21411-04400	HUB, sleeve	1	
5	21431-04400	PLATE, ball	1	
6	21631-04400	GUIDE, ball	1	
7	06111-12004	BALL	8	
8	02122-06167	SCREW	3	
9-1	21441-04400	PLATE, drive	2	model N/P
9-2	21441-09D02	PLATE, drive	2	model R
10	21451-04400	PLATE, driven outer	1	
11	21452-04400	PLATE, driven	1	
12	21454-04400	PLATE, inner	1	
13	09440-06007	SPRING	3	
14	08331-41386	CIRCLIP	1	
15	09164-12016	WASHER	1	
16	09140-12012	NUT	1	
17	21461-04400	PLATE, pressure	1	
18	23121-04400	PIECE, push	1	
19	09263-10002	BEARING	1	
20	23241-04400	PLATE, release	1	
21	23230-04400	PLATE, release inner	1	
22	09440-12018	SPRING	3	
23	09180-06065	SPACER (6x9x10.3)	3	
24	01107-06207	BOLT	3	
25	08322-21067	WASHER	3	
26	08310-00067	NUT	1	
27	23210-04400	LINK PLATE, release arm	1	
28	09111-08032	BOLT	1	
29	08211-08161	WASHER	1	
30	23220-04400	ARM, release plate	1	
31	08332-11096	E RING	1	

FIG. 10

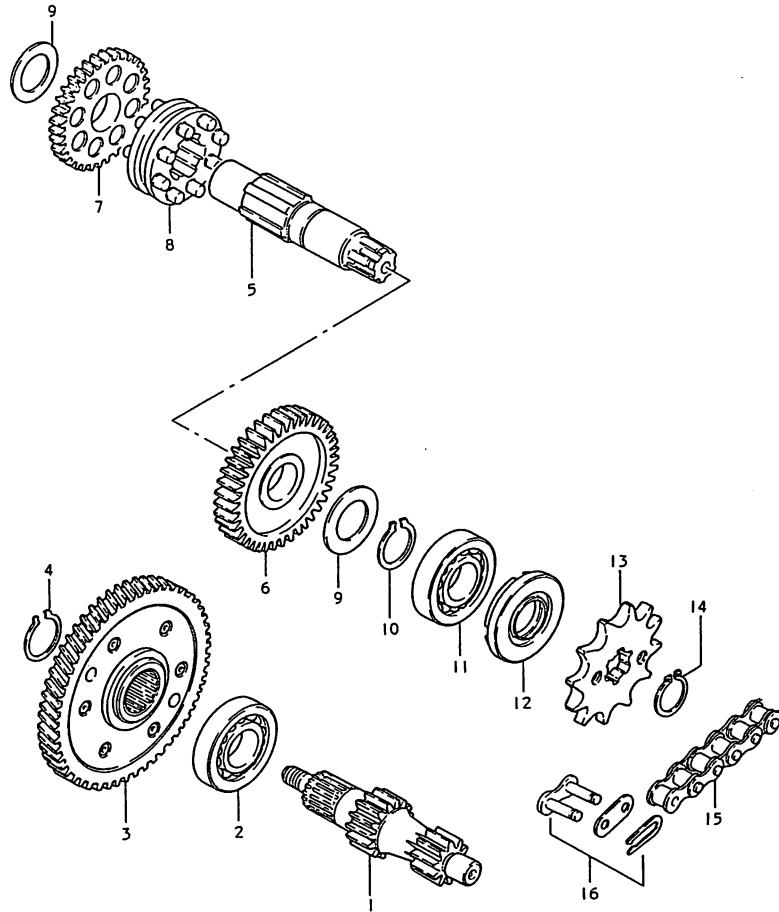
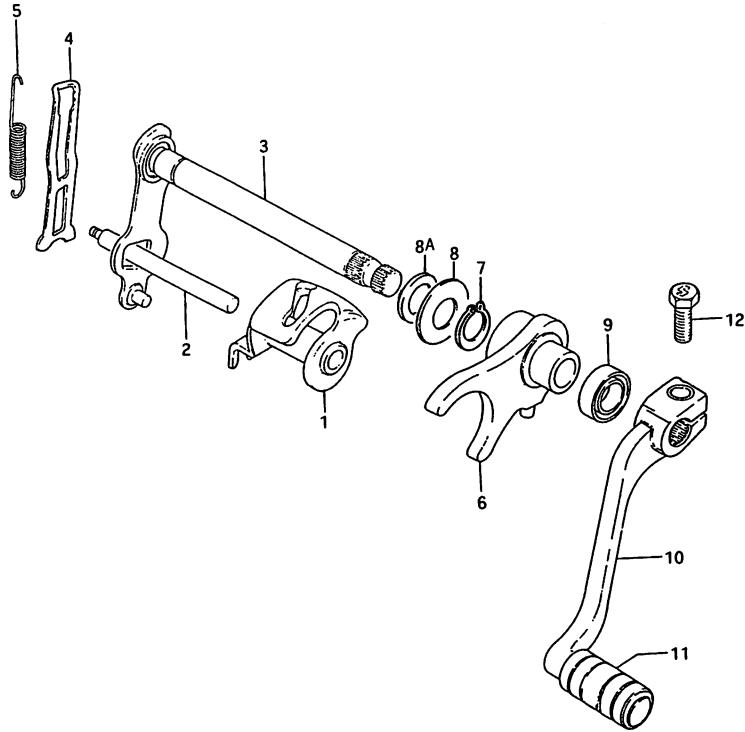


FIG.10 (C- 3) TRANSMISSION

REF.NO.	PART NO.	DESCRIPTION	Q'TY	REMARKS
1	24121-04010	COUNTERSHAFT (NT:10/13/1)	1	
2	09262-17023	BEARING (17x40x12)	1	
3-1	21200-04500	GEAR, primary driven (NT:53)	1	model N/P
3-2	21200-04501	GEAR, primary driven (NT:53)	1	model R
4	09380-17003	CIRCLIP	1	
5	24131-04001	DRIVESHAFT	1	
6	24311-04001	GEAR, 1st driven (NT:40)	1	
7	24321-04010	GEAR, 2nd driven (NT:29)	1	
8	24411-04003	WHEEL, sliding	1	
9	08211-17301	WASHER	2	
10	09380-17003	CIRCLIP	1	
11	09262-17023	BEARING	1	
12-1	09283-17001	OIL SEAL (17x29x7)	1	model N/P
12-2	09283-17010	OIL SEAL (17x29x7)	1	model R
13	27511-19000	SPROCKET, engine (NT:13)	1	
14	08331-31166	CIRCLIP	1	
15	27600-46221	CHAIN, drive (420x88+78L)	1	
16-1	27620-01023	.JOINT (RK)	1	
16-2	27620-01012	JOINT (DID)	1	

FIG.11

FIG.11 (C- 4) GEAR SHIFTING



REF.NO.	PART NO.	DESCRIPTION	Q'TY	REMARKS
1	25310-04000	CAM, gear shifting	1	
2	25411-04000	SHAFT, cam	1	
3-1	25510-04400	SHAFT, gear shifting	1	-E.No.A102-121019
3-2	25510-04401	SHAFT, gear shifting	1	E.No.A102-121020-
4	25352-04000	ARM, cam stopper	1	
5	09443-08008	SPRING	1	
6	25210-04001	FORK, gear shifting	1	
7	08331-31126	CIRCLIP	1	+09384-12001
8	08211-12261	WASHER	1	
8A	08211-12205	WASHER	1	E.No.A102-121020-
9	09285-12002	OIL SEAL (12x22x9)	1	
10-1	25600-29300	LEVER ASSY, gear shifting	1	model N/P
10-2	25600-29310	LEVER ASSY, gear shifting	1	model R
11	25652-16500	.COVER	1	
12-1	01107-06207	BOLT	1	model N/P
12-2	01500-06203	BOLT	1	model R

FIG. 12

2

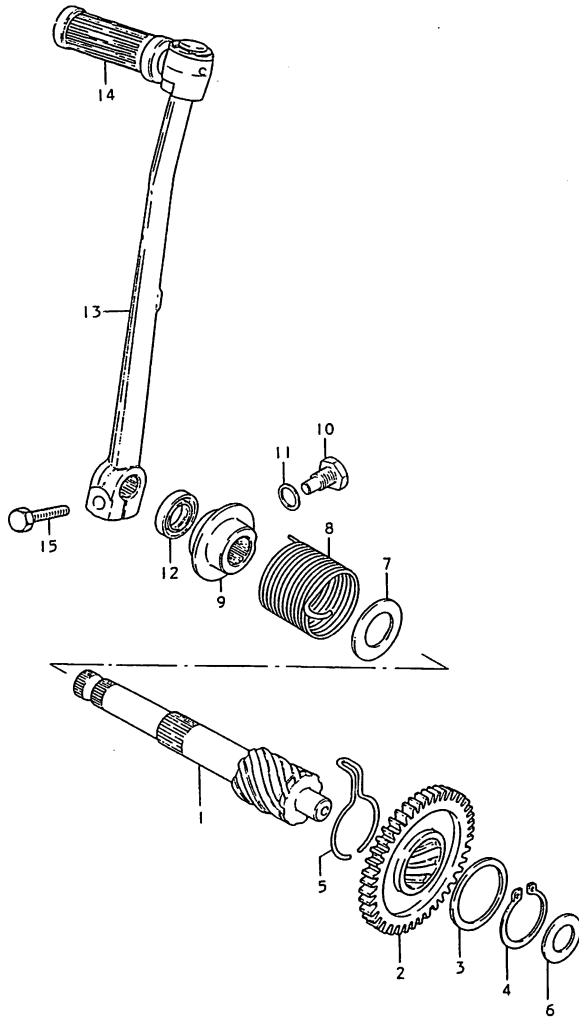
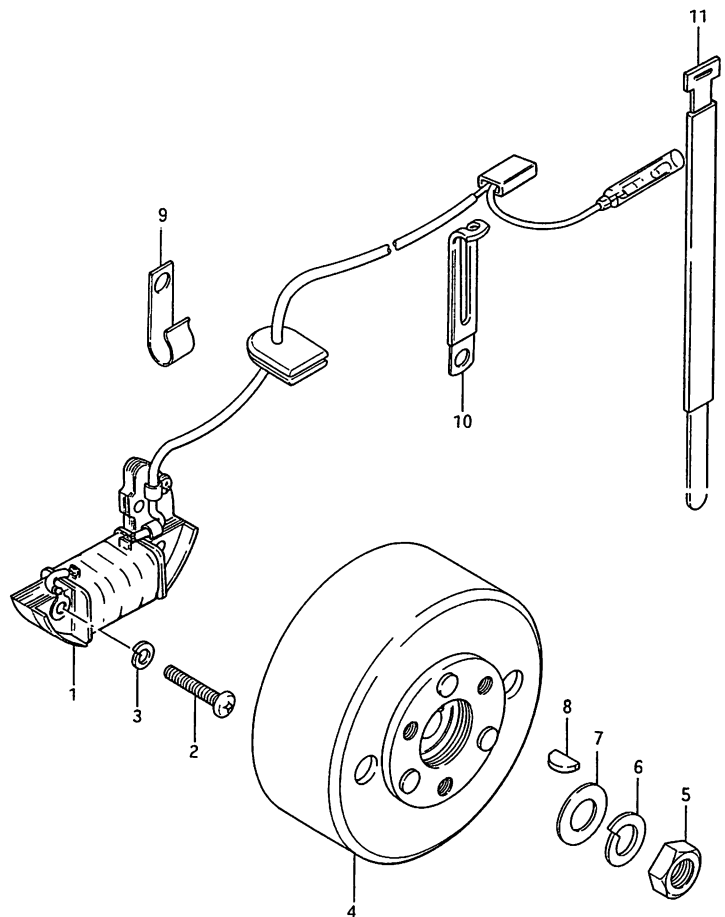


FIG.12 (C- 5) KICK STARTER

REF.NO.	PART NO.	DESCRIPTION	Q'TY	REMARKS
1	26211-04000	SHAFT, kick starter	1	
2	26241-04001	GEAR, drive (NT:43)	1	
3	08211-25321	WASHER (25x32x1)	1	
4	09380-25009	CIRCLIP	1	
5	09384-30001	RETAINER SPRING	1	
6	08211-12261	WASHER	1	
7	09160-16003	WASHER (16x30.5x1)	1	
8	09448-41001	SPRING	1	
9	26232-04400	STOPPER, kick starter	1	
10	09135-10003	BOLT	1	
11	09168-10002	GASKET	1	
12	09285-14001	OIL SEAL (14x24x6)	1	
13	26300-04402	LEVER ASSY, kick starter	1	
14	26352-01000	.COVER	1	
15-1	01107-06207	BOLT	1	model N/P
15-2	01500-06203	BOLT	1	model R

FIG. 13

FIG.13 (D- 2) MAGNETO



REF.NO.	PART NO.	DESCRIPTION	Q'TY	REMARKS
1	32101-04431	COIL ASSY, primary	1	
2	02112-04258	SCREW	2	
3	08321-21047	LOCK WASHER	2	
4	32102-04430	ROTOR, flywheel	1	
5	08310-12108	NUT	1	
6	08321-21107	LOCK WASHER	1	
7	08322-21108	WASHER	1	
8	08341-31039	KEY	1	
9	09403-05303	CLAMP	1	
10	09404-06401	CLAMP (L:50)	1	
11	09407-14301	CLAMP (L:140)	2	

FIG. 14

3

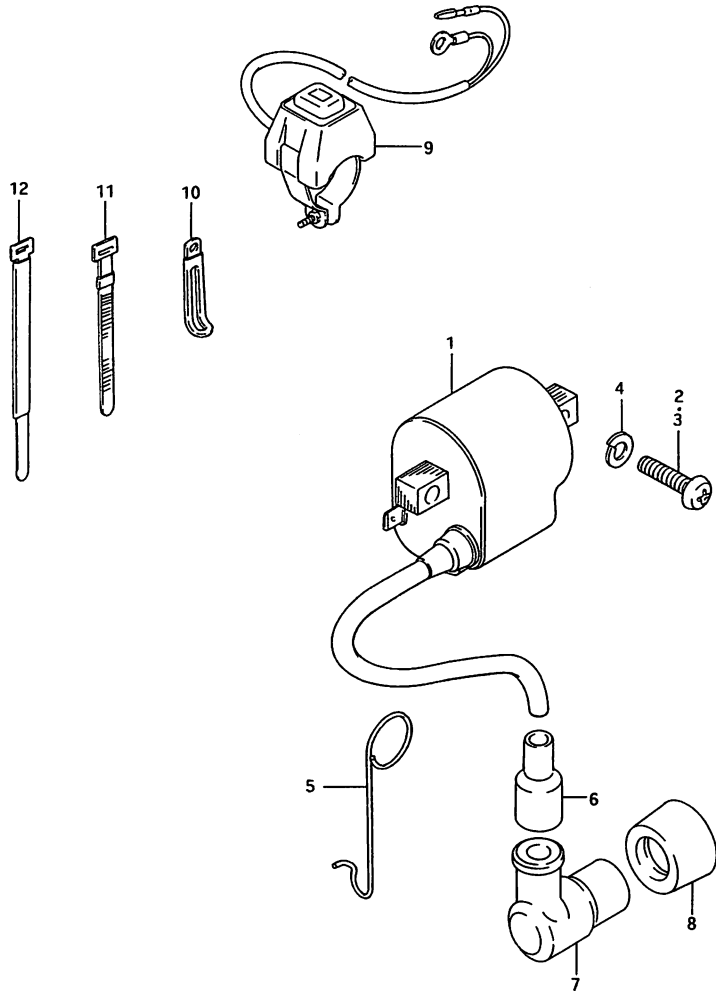


FIG.14 (D- 3) ELECTRICAL

REF.NO.	PART NO.	DESCRIPTION	Q'TY	REMARKS
1	33410-17319	UNIT & COIL ASSY, ignition	1	
2	02112-06207	SCREW	1	
3	02112-06257	SCREW	1	
4	08321-21067	LOCK WASHER	2	
5	58626-04410	GUIDE, high tension cord	1	
6	33542-35410	SEAL, high tension cord	1	model R
7-1	33510-41111	CAP, spark plug	1	model N/P
7-2	33510-35411	CAP, spark plug	1	model R
8	33541-69010	SEAL, spark plug	1	model R
9-1	37820-27C00	SWITCH ASSY, engine stop	1	model N/P
9-2	37820-14X50	SWITCH ASSY, engine stop	1	model R
10	09404-06402	CLAMP (L:60)	1	
11	09407-12402	BAND (L:120)	1	
12	09407-18301	CLAMP (L:180)	1	

FIG.15

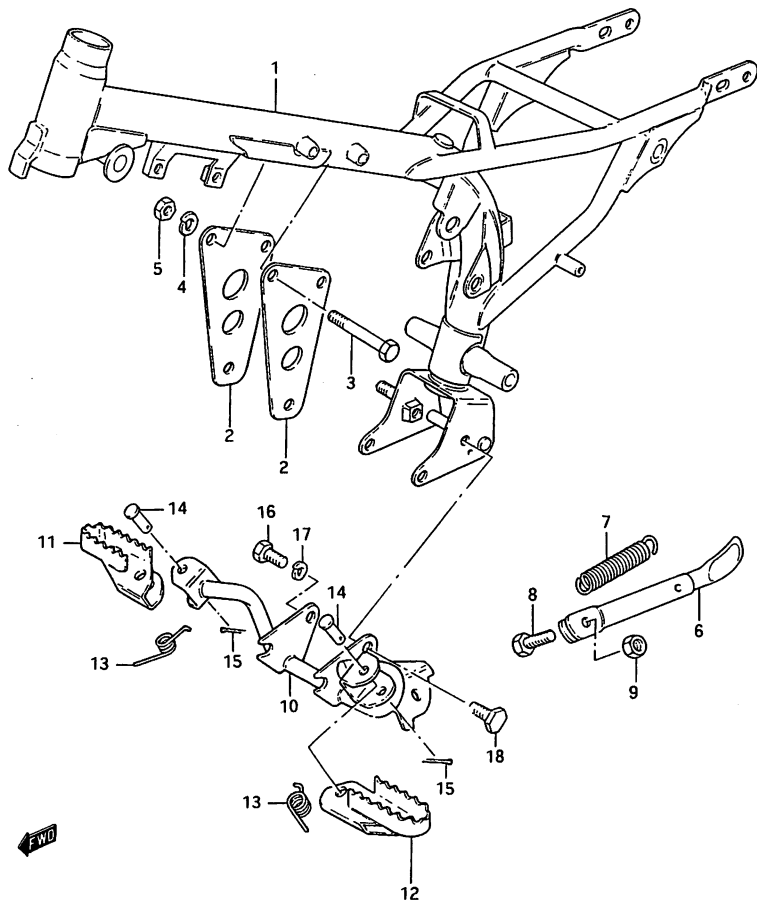


FIG.15 (E- 2) FRAME - FOOTREST

REF.NO.	PART NO.	DESCRIPTION	Q'TY	REMARKS
1-1	41100-04431-19F	FRAME (Blue)	1	model N
1-2	41100-04431-019	FRAME (Black)	1	model P/R
2	41991-04410	PLATE, mounting	2	
3-1	01107-08708	BOLT	2	model N/P
3-2	01500-08703	BOLT	2	model R
4-1	08321-21088	LOCK WASHER	2	model N/P
4-2	08321-01083	LOCK WASHER	2	model R
5-1	08310-12088	NUT	2	model N/P
5-2	08310-00083	NUT	2	model R
6-1	42300-04420-19F	STAND, prop (Blue)	1	model N
6-2	42300-04420-019	STAND, prop (Black)	1	model P/R
7	09443-14017	SPRING	1	
8	09100-08145	BOLT (8x22)	1	
9-1	08310-12088	NUT	1	model N/P
9-2	08310-00083	NUT	1	model R
10	43510-04411	BAR, front footrest	1	
11-1	43550-46000-19F	FOOTREST, RH (Blue)	1	model N
11-2	43550-46000-019	FOOTREST, RH (Black)	1	model P/R
12-1	43560-46000-19F	FOOTREST, LH (Blue)	1	model N
12-2	43560-46000-019	FOOTREST, LH (Black)	1	model P/R
13	09448-14012	SPRING	2	
14	09200-08002	PIN	2	
15	04111-20208	COTTER PIN	2	
16-1	01107-08167	BOLT	1	model N/P
16-2	01500-08163	BOLT	1	model R
17-1	08321-21088	LOCK WASHER	1	model N/P
17-2	08321-01083	LOCK WASHER	1	model R
18	09100-08143	BOLT, LH	1	

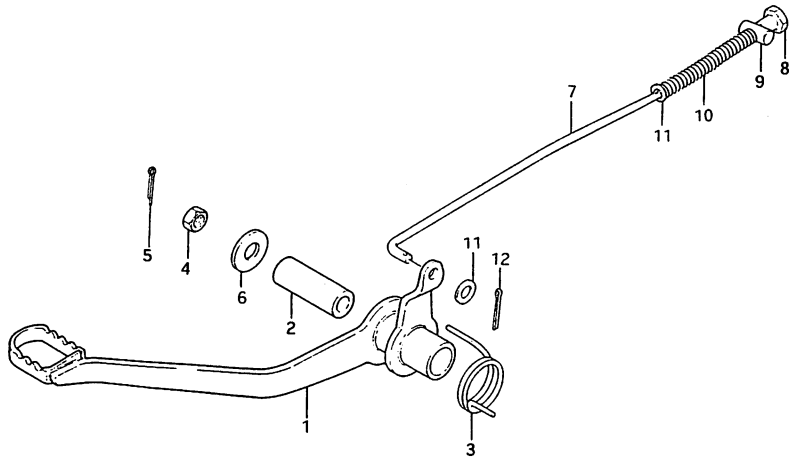
4

FWD

FIG. 16

FIG.16 (E- 3) REAR BRAKE

REF.NO.	PART NO.	DESCRIPTION	Q'TY	REMARKS
1	43110-04410	PEDAL, brake	1	
2	43181-04411	SPACER	1	
3	43182-04410	SPRING	1	
4-1	08314-31108	NUT	1	model N/P
4-2	09141-10006	NUT	1	model R
5	04111-25208	COTTER PIN	1	
6-1	08322-21108	WASHER	1	model N/P
6-2	09160-10119	WASHER	1	model R
7	43300-04410	ROD ASSY, brake	1	
8	09150-05003	.NUT	1	
9	09209-10001	.PIN	1	
10	09440-09004	.SPRING	1	
11-1	08322-21057	.WASHER	1	model N/P
11-2	08322-01053	.WASHER	1	model R
12	04111-20158	.COTTER PIN	1	



4

← FWD

FIG.17

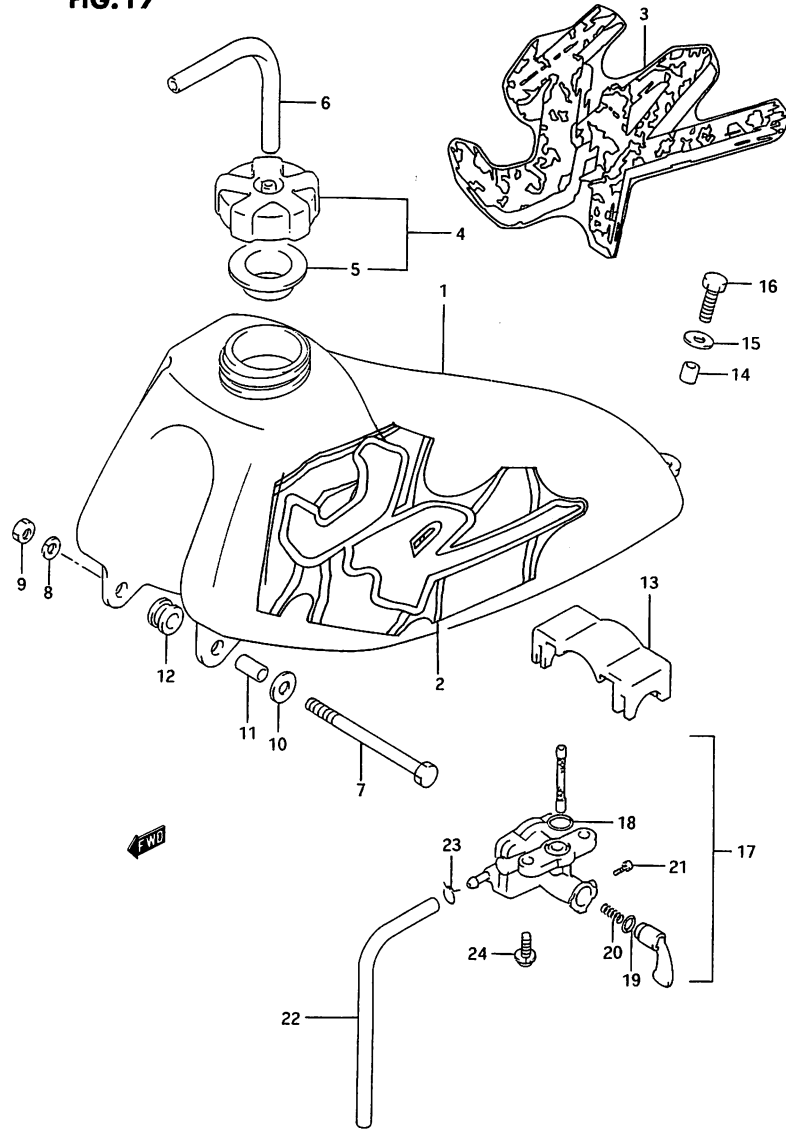


FIG.17 (E- 4) FUEL TANK (model N/P)

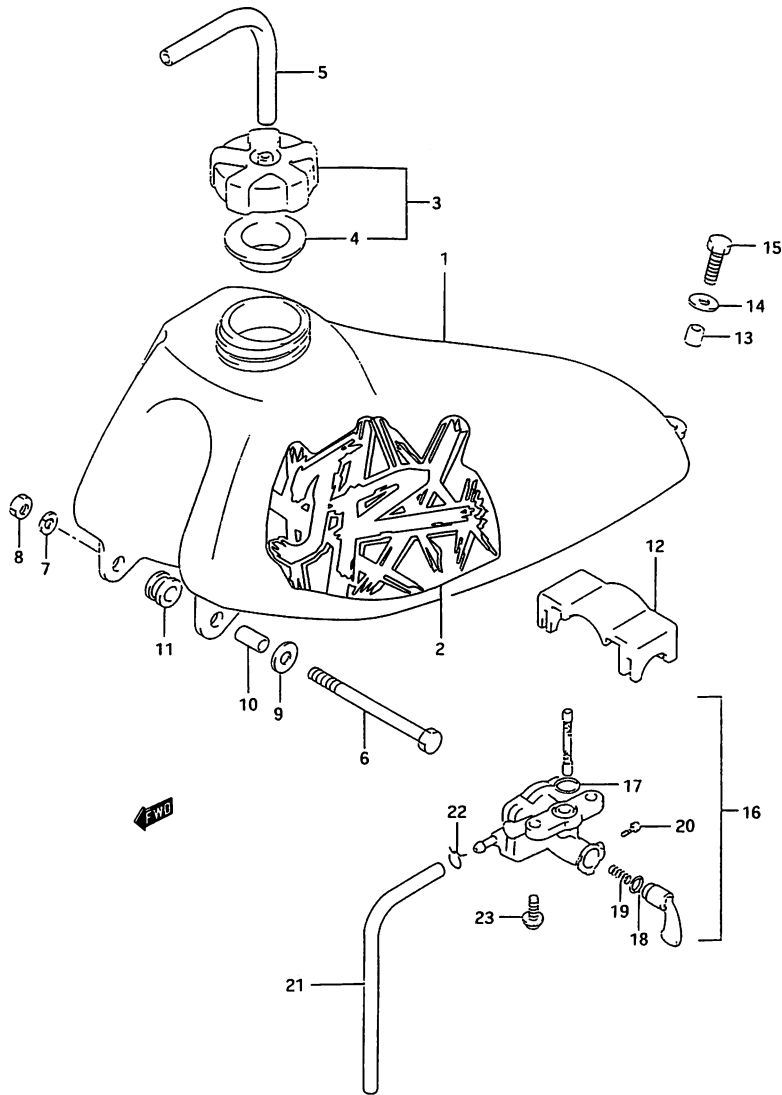
REF.NO.	PART NO.	DESCRIPTION	Q'TY	REMARKS
1	44110-04420-25Y	TANK, fuel (Yellow)	1	
2-1	68121-04410-L58	EMBLEM, fuel tank RH	1	model N
2-2	68122-04410-L58	EMBLEM, fuel tank LH	1	model N
3-1	68121-04420-A4H	EMBLEM, fuel tank RH	1	model P
3-2	68122-04420-A4H	EMBLEM, fuel tank LH	1	model P
4	44200-40810	CAP, fuel tank	1	
5	44248-40400	.GASKET	1	
6	09352-50823-300	HOSE (L:300+200)	1	
7	01107-06908	BOLT	1	
8	08321-21067	LOCK WASHER	1	
9	08310-11067	NUT	1	
10	09160-06028	WASHER	2	
11	09180-06006	SPACER	2	
12	09320-10008	CUSHION, front	2	
13	44542-04420	CUSHION, upper	1	
14	09180-06111	SPACER	1	
15	09160-06028	WASHER	2	
16	01107-06167	BOLT	1	
17	44300-04420	COCK ASSY, fuel	1	
18	44348-41370	.O RING, joint	1	
19	44353-41370	.O RING, lever	1	
20	44357-41370	.SPRING	1	
21	44343-41370	.SCREW	1	
22	09352-50823-300	HOSE, fuel (L:300+150)	1	
23	09401-08401	CLIP	2	
24	02112-36168	SCREW	2	

Refer to FIG.17A(E-5) for model R

FIG. 17 A

FIG.17A(E- 5) FUEL TANK (model R)

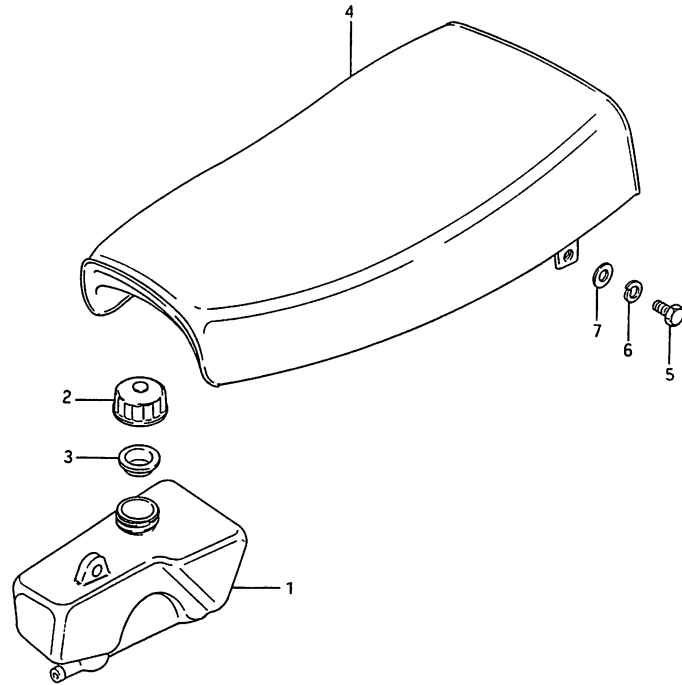
4



REF.NO.	PART NO.	DESCRIPTION	Q'TY	REMARKS
1	44110-04420-25Y	TANK, fuel (Yellow)	1	
2-1	68121-04430-C2M	EMBLEM, fuel tank RH	1	
2-2	68122-04430-C2M	EMBLEM, fuel tank LH	1	
3	44200-40810	CAP, fuel tank	1	
4	44248-40400	.GASKET	1	
5	09352-50823-300	HOSE (L:300+200)	1	
6	01500-06903	BOLT	1	
7	08321-01063	LOCK WASHER	1	
8	08310-00063	NUT	1	
9	09160-06028	WASHER	2	
10	09180-06112	SPACER	2	
11	09320-10008	CUSHION, front	2	
12	44542-04420	CUSHION, upper	1	
13	09180-06111	SPACER	1	
14	09160-06028	WASHER	2	
15	01500-06163	BOLT	1	
16	44300-04420	COCK ASSY, fuel	1	
17	44348-41370	.O RING, joint	1	
18	44353-41370	.O RING, lever	1	
19	44357-41370	.SPRING	1	
20	44343-41370	.SCREW	1	
21	09352-50823-300	HOSE, fuel (L:300+150)	1	
22	09401-08401	CLIP	2	
23	02112-36163	SCREW	2	

FIG. 18

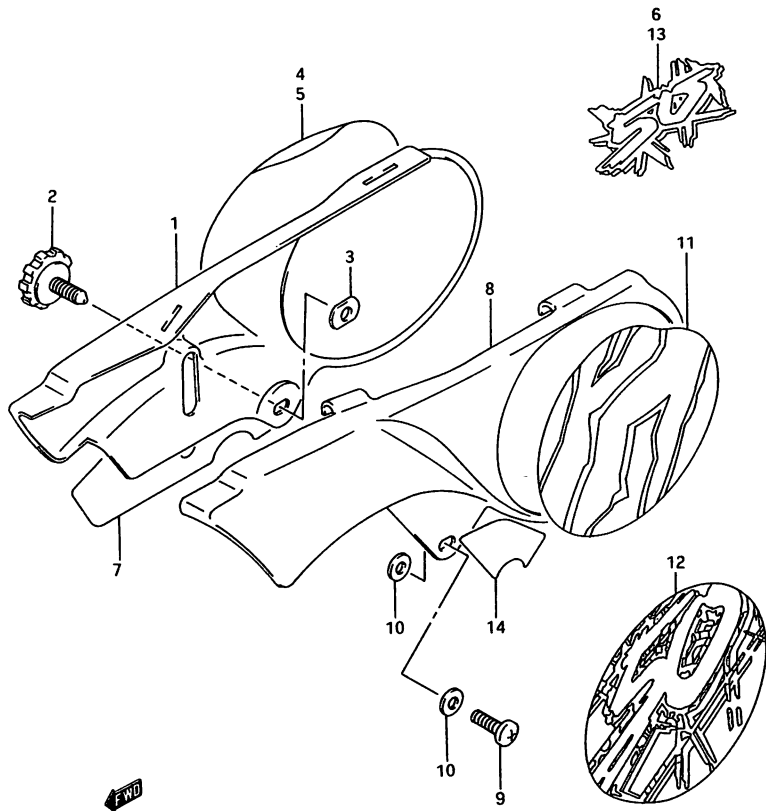
FIG.18 (E- 6) OIL TANK - SEAT



REF.NO.	PART NO.	DESCRIPTION	Q'TY	REMARKS
1	44611-04410	TANK, oil	1	
2	44651-04410	CAP, oil tank	1	
3	44661-32100	GASKET	1	
4-1	45100-04480-4UZ	SEAT (Blue)	1	model N
4-2	45100-04490-4YE	SEAT (Yellow)	1	model P/R
5-1	01107-06167	BOLT	2	model N/P
5-2	01500-06163	BOLT	2	model R
6-1	08321-21067	LOCK WASHER	2	model N/P
6-2	08321-01063	LOCK WASHER	2	model R
7-1	08322-21067	WASHER	2	model N/P
7-2	08322-01063	WASHER	2	model R

FIG. 19

FIG.19 (E- 7) FRAME COVER



REF.NO.	PART NO.	DESCRIPTION	Q'TY	REMARKS
1-1	47111-04420-25Y	COVER, frame RH (Yellow)	1	model N
1-2	47111-04420-30H	COVER, frame RH (White)	1	model P/R
2	47130-33101	KNOB	1	
3	09152-06002	STOPPER, knob	1	
4	68135-04420-L59	TAPE, frame cover RH	1	model N
5	68135-04430-A4J	TAPE, frame cover RH	1	model P
6	68140-04400-C3A	EMBLEM, RH	1	model R
7	68131-04410	EMBLEM, lower RH	1	
8-1	47211-04420-25Y	COVER, frame LH (Yellow)	1	model N
8-2	47211-04420-30H	COVER, frame LH (White)	1	model P/R
9-1	02112-06128	SCREW	1	model N/P
9-2	02112-06123	SCREW	1	model R
10-1	09160-06006	WASHER (18x6.5x1.6)	2	model N/P
10-2	09160-06084	WASHER (18x6.5x1.6)	2	model R
11	68145-04420-L59	TAPE, frame cover LH	1	model N
12	68145-04430-A4J	TAPE, frame cover LH	1	model P
13	68140-04400-C3A	EMBLEM, LH	1	model R
14	68141-04410	EMBLEM, lower LH	1	

FIG. 20

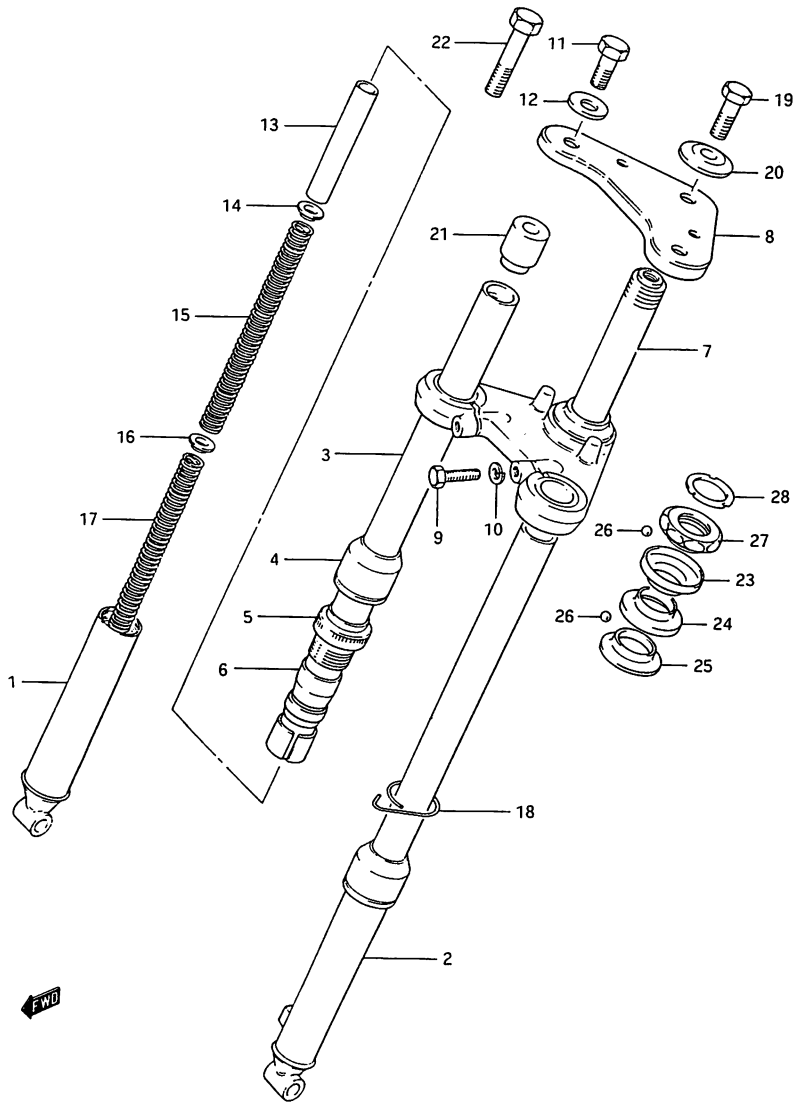


FIG.20 (F- 2) FRONT FORK

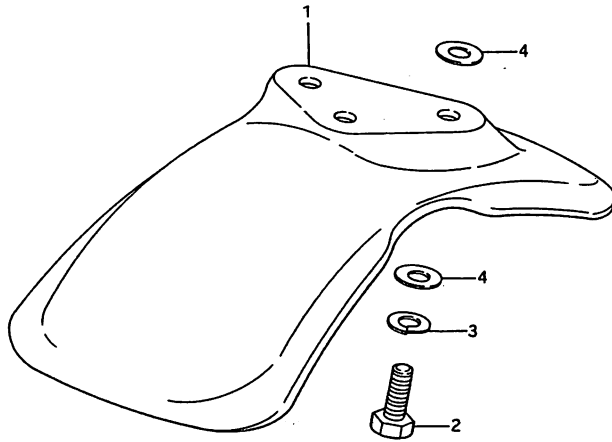
REF.NO.	PART NO.	DESCRIPTION	Q'TY	REMARKS
	51100-04430-126	FORK ASSY, front (Pearl Metallic)	1	model N/P
	51100-04430-13L	FORK ASSY, front (Silver)	1	model R
1-1	51130-04411	.OUTER TUBE, RH	1	model N/P
1-2	51130-04411-13L	.OUTER TUBE, RH (Silver)	1	model R
2-1	51140-04411	.OUTER TUBE, LH	1	model N/P
2-2	51140-04411-13L	.OUTER TUBE, LH (Silver)	1	model R
3	51110-04420	.INNER TUBE	2	
4	51173-04410	.DUST SEAL	2	
5	51150-04410	.NUT, outer	2	
6	51193-04410	.STOPPER	2	
7	51410-04430	.STEERING STEM	1	
8	51310-04430	.STEERING STEM HEAD	1	
9-1	01107-08258	.BOLT	2	model N/P
9-2	01500-08257	.BOLT	2	model R
10-1	08321-21088	.LOCK WASHER	2	model N/P
10-2	08321-01087	.LOCK WASHER	2	model R
11	51352-04420	.BOLT	2	
12	51356-07010	.WASHER (36x10.5x2.3)	2	
13	51176-04420	.SPACER	2	
14	51172-04420	.GUIDE, spring, No.1	2	
15	51171-04420	.SPRING, No.1	2	
16	51172-04410	.GUIDE, spring, No.2	2	
17	51184-04420	.SPRING, No.2	2	
18	51572-04410	.CLIP	1	
19	51351-04420	.BOLT	1	
20	51356-04420	.WASHER (33.5x10.5x4.2)	1	
21	52331-04420	SPACER	2	
22	52332-04420	BOLT	2	
23	51622-29C10	RACE, outer lower	1	
24	51612-02200	RACE, inner lower	1	
25	51611-02200	RACE, inner upper	1	
26	06111-05004	STEEL BALL	50	
27	51621-02200	RACE, outer upper	1	
28	51631-04410	NUT, steering	1	

JR50R

FIG. 21

FIG.21 (F- 3) FRONT FENDER

REF.NO.	PART NO.	DESCRIPTION	Q'TY	REMARKS
1	53111-04420-25Y	FENDER, front (Yellow)	1	
2-1	01107-06127	BOLT	3	model N/P
2-2	01500-06123	BOLT	3	model R
3-1	08321-21067	LOCK WASHER	3	model N/P
3-2	08321-01063	LOCK WASHER	3	model R
4	09160-06028	WASHER	6	

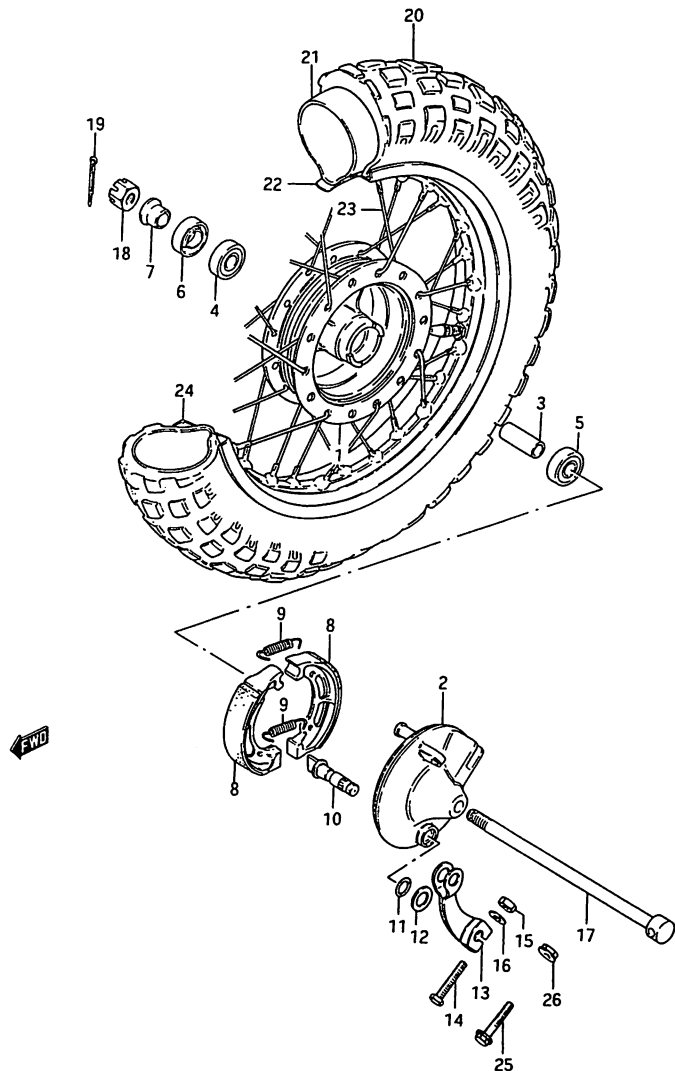


4



FIG. 22

FIG. 22 (F- 4) FRONT WHEEL



REF.NO.	PART NO.	DESCRIPTION	Q'TY	REMARKS
1	54110-04400	HUB, front wheel	1	
2	54210-04410	PANEL, brake anchor	1	
3	09180-10012	SPACER	1	
4	08113-60000	BEARING, RH	1	
5	08143-60007	BEARING, LH	1	
6	09284-15004	OIL SEAL (15x27x6)	1	
7	54741-04000	SPACER, axle	1	
8-1	54410-04002	SHOE, brake	2	model N
8-2	64410-04201	SHOE, brake	2	model P/R
9	09443-07025	SPRING	2	
10	54441-04001	CAM, brake	1	
11	09280-10006	O RING	1	
12	09160-10026	WASHER (10.2x18x1)	1	
13	54451-04000	LEVER, brake cam	1	
14	01107-05258	BOLT	1	model N
15	08310-11057	NUT	1	model N
16	08322-21057	WASHER	1	model N
17	54711-04410	AXLE, front	1	
18-1	08314-31108	NUT	1	model N/P
18-2	09141-10006	NUT	1	model R
19	04111-20208	COTTER PIN	1	
20	55100-04410	TIRE, front (2.50-10)	1	
21	55200-04410	TUBE, inner	1	
22	55261-04410	PROTECTOR	1	
23	55300-04820	SPOKE SET	1	
24	55311-04410	RIM, wheel (1.40x10)	1	
25-1	01517-05258	BOLT	1	model P
25-2	01550-05253	BOLT	1	model R
26-1	08316-16058	NUT	1	model P
26-2	08316-10053	NUT	1	model R

JR50R

4

FIG. 23

FIG.23 (F- 5) HANDLEBAR - CABLE

Q'TY

REF.NO.	PART NO.	DESCRIPTION	Q'TY	REMARKS
1	56110-04411-291	HANDLEBAR (Black)	1	
2-1	01107-08167	BOLT	2	model N/P
2-2	01500-08163	BOLT	2	model R
3-1	08321-21088	LOCK WASHER	2	model N/P
3-2	08321-01083	LOCK WASHER	2	model R
4	58100-04420	CABLE ASSY, brake	1	
5	09150-05101	.NUT	1	
6	09209-10001	.PIN	1	
7	09287-07001	.BOOT	1	
8	09440-06003	.SPRING	1	
9	58300-04420	CABLE ASSY, throttle	1	
10	09407-18301	CLAMP	1	

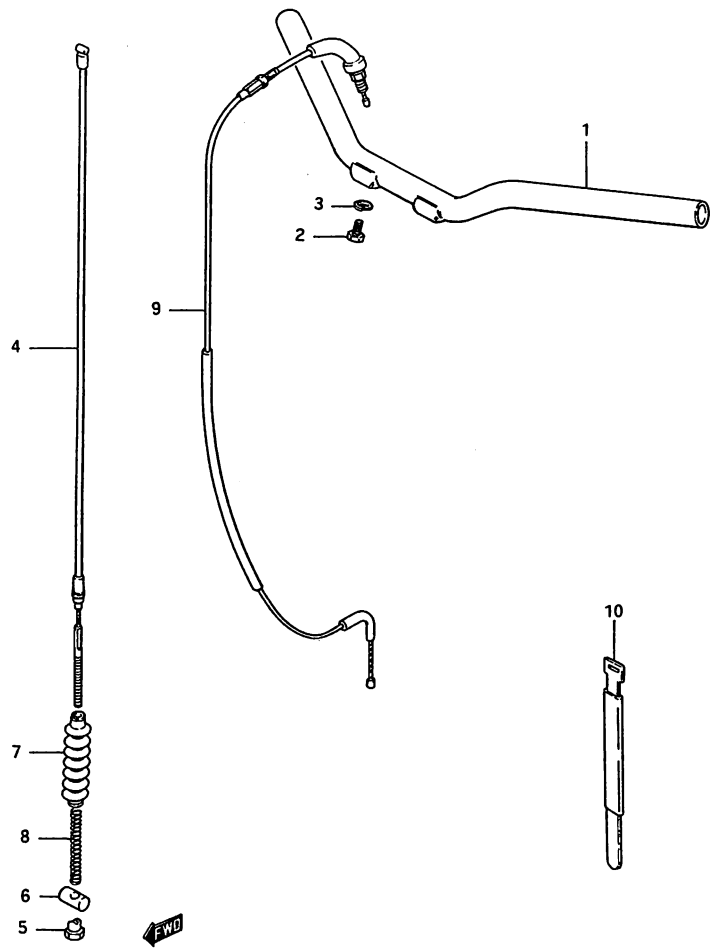
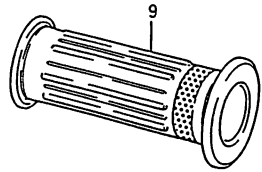


FIG. 24

FIG.24 (F- 6) HANDLE GRIP

REF.NO.	PART NO.	DESCRIPTION	Q'TY	REMARKS
1	57110-04410	GRIP, throttle	1	
2	58631-07010	PIECE, end	1	
3	57300-04420	LEVER ASSY, brake	1	
4	09125-05065	.SCREW	2	
5	57421-04420	.LEVER, brake (Black)	1	
6	57431-04420	.BOLT	1	
7	08310-12055	.NUT	1	
8	08321-21055	.LOCK WASHER	1	
9	57211-04410	GLIP, LH	1	



END

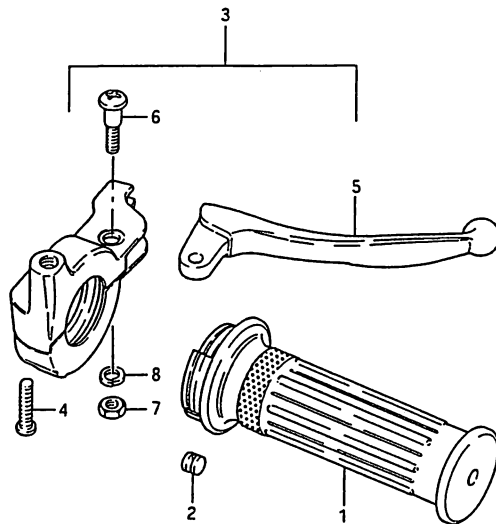


FIG. 25

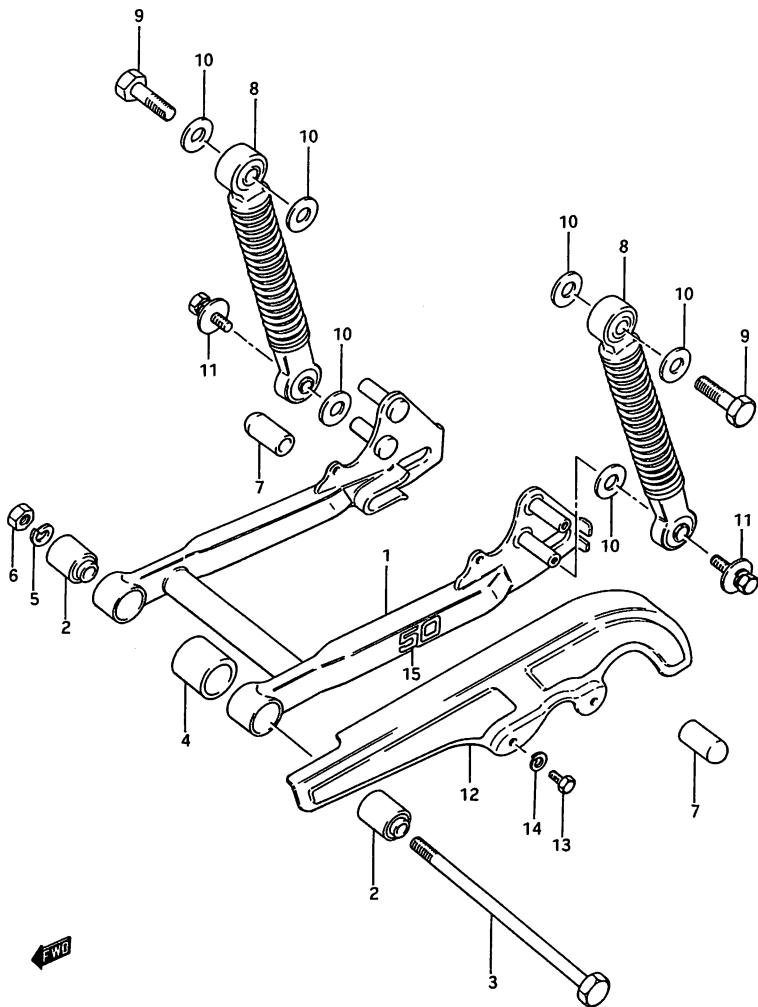
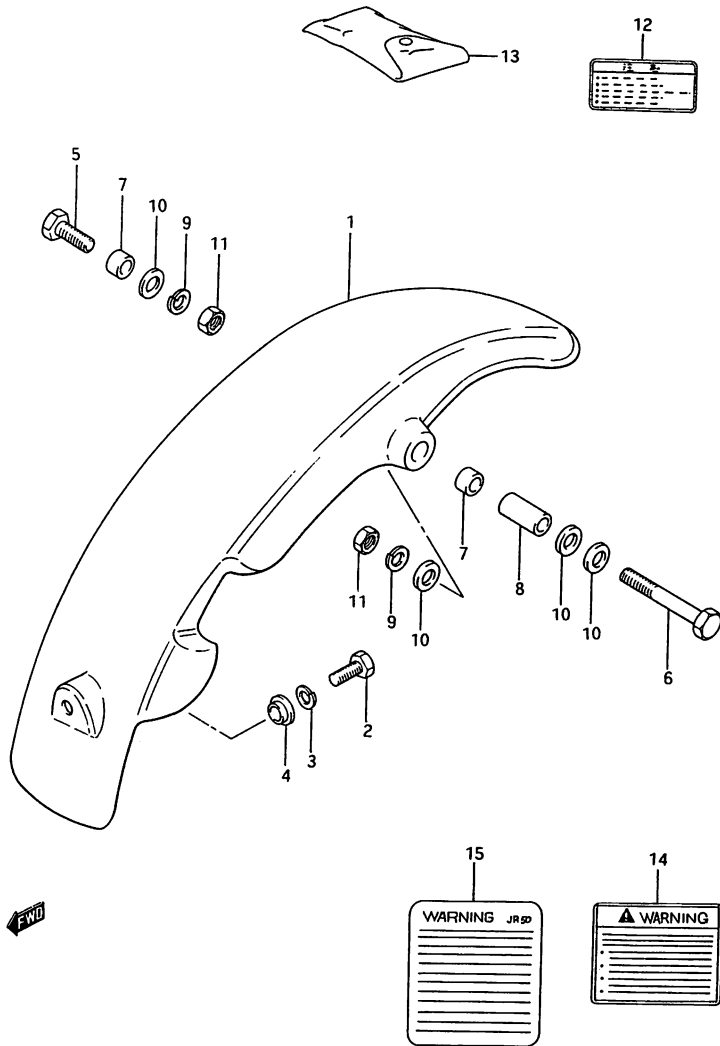


FIG.25 (G- 2) REAR SWINGING ARM

REF.NO.	PART NO.	DESCRIPTION	Q'TY	REMARKS
1-1	61000-04420-126	SWINGING ARM ASSY, rear (Pearl)	1	model N/P
1-2	61000-04420-13L	SWINGING ARM ASSY, rear (Silver)	1	model R
2	09319-10014	.BUSHING	2	
3	61211-04410	SHAFT	1	
4	09320-20002	CUSHION	1	
5-1	08321-21107	LOCK WASHER	1	model N/P
5-2	09160-10051	LOCK WASHER	1	model R
6-1	08310-12108	NUT	1	model N/P
6-2	08310-00103	NUT	1	model R
7	61223-04420	CAP, boss	2	
8	62100-04410	ABSORBER ASSY, rear shock	2	
9	01107-10358	BOLT, upper	2	
10-1	08322-21108	WASHER	6	model N/P
10-2	09160-10119	WASHER	6	model R
11	09118-06055	BOLT	2	
12	61310-04410	CASE, chain	1	
13-1	01107-06127	BOLT	2	model N/P
13-2	01500-06123	BOLT	2	model R
14-1	08321-21067	LOCK WASHER	2	model N/P
14-2	08321-01063	LOCK WASHER	2	model R
15	68381-04400-17U	EMBLEM, 50	2	model N

FIG. 26

FIG.26 (G- 3) REAR FENDER



REF.NO.	PART NO.	DESCRIPTION	Q'TY	REMARKS
1	63111-04411-25Y	FENDER, rear (Yellow)	1	
2-1	01107-06127	BOLT	1	model N/P
2-2	01500-06123	BOLT	1	model R
3-1	08321-21067	LOCK WASHER	1	model N/P
3-2	08321-01063	LOCK WASHER	1	model R
4	09169-06011	WASHER	1	
5-1	01107-08207	BOLT, RH	1	model N/P
5-2	01500-08203	BOLT, RH	1	model R
6-1	01107-08508	BOLT, LH	1	model N/P
6-2	01500-08503	BOLT, LH	1	model R
7	63147-04410	SPACER (8.2x11x5.4)	2	
8	09180-08057	SPACER (8.2x12.5x23.5)	1	
9-1	08321-21088	LOCK WASHER	2	model N/P
9-2	08321-01083	LOCK WASHER	2	model R
10-1	08322-21088	WASHER	4	model N/P
10-2	08322-01083	WASHER	4	model R
11-1	08310-12088	NUT	2	model N/P
11-2	08310-00083	NUT	2	model R
12-1	68367-04400-8JR	LABEL, warning	1	model N/P +68367-04200-8JR
12-2	68367-04200-8JR	LABEL, warning	1	
13-1	09800-03801	TOOL ASSY	1	model N/P
13-2	09800-21027	TOOL ASSY	1	model R
14	68319-14000	LABEL, warning safety	1	model R
15	68369-04420	LABEL, warning	1	model R

FIG. 27

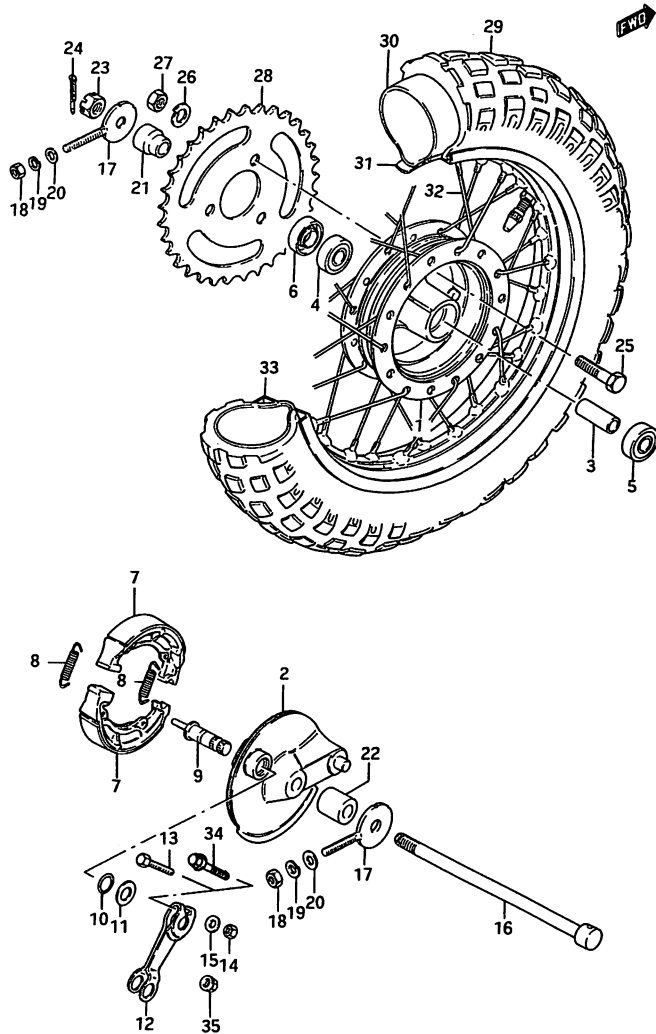


FIG. 27 (G- 4) REAR WHEEL

REF.NO.	PART NO.	DESCRIPTION	Q'TY	REMARKS
1	64110-04400	HUB, rear wheel	1	
2	64210-04400	PANEL, brake anchor	1	
3	09180-10013	SPACER (10.2x16x55)	1	
4	08113-60000	BEARING, LH	1	
5	08143-60007	BEARING, RH	1	
6	09284-15004	OIL SEAL	1	
7-1	54410-04002	SHOE, brake	2	model N
7-2	64410-04201	SHOE, brake	2	model P/R
8	09443-07025	SPRING	2	
9	54441-04001	CAM, brake	1	
10	09280-10006	O RING	1	
11	09160-10026	WASHER (10.2x18x1)	1	
12	64451-04000	LEVER, brake cam	1	
13	01107-05258	BOLT	1	model N
14	08310-11057	NUT	1	model N
15	08322-21057	WASHER	1	model N
16	54711-04410	AXLE, rear	1	
17	61411-04000	ADJUSTER, chain	2	
18-1	08310-11067	NUT	2	model N/P
18-2	08310-00063	NUT	2	model R
19-1	08321-21067	LOCK WASHER	2	model N/P
19-2	08321-01063	LOCK WASHER	2	model R
20-1	08322-21067	WASHER	2	model N/P
20-2	08322-01063	WASHER	2	model R
21	64751-04410	SPACER, LH (L:22)	1	
22	64741-04410	SPACER, RH (10x20x21)	1	
23-1	08314-31108	NUT	1	model N/P
23-2	09141-10006	NUT	1	model R
24	04111-20208	COTTER PIN	1	

FIG. 27

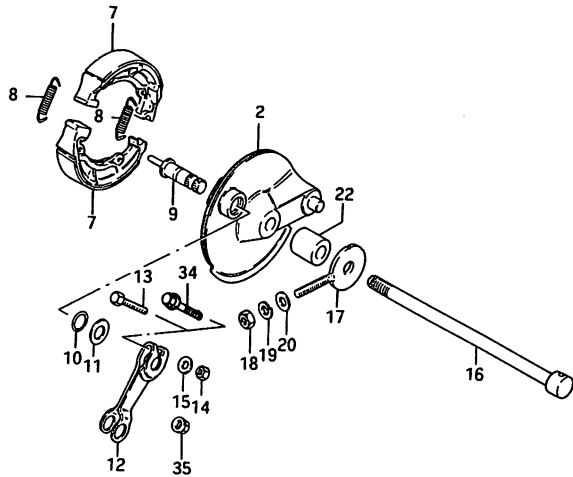
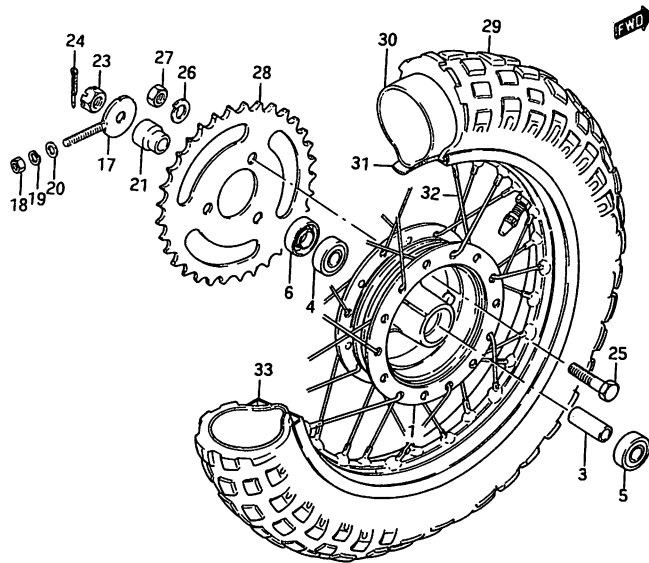


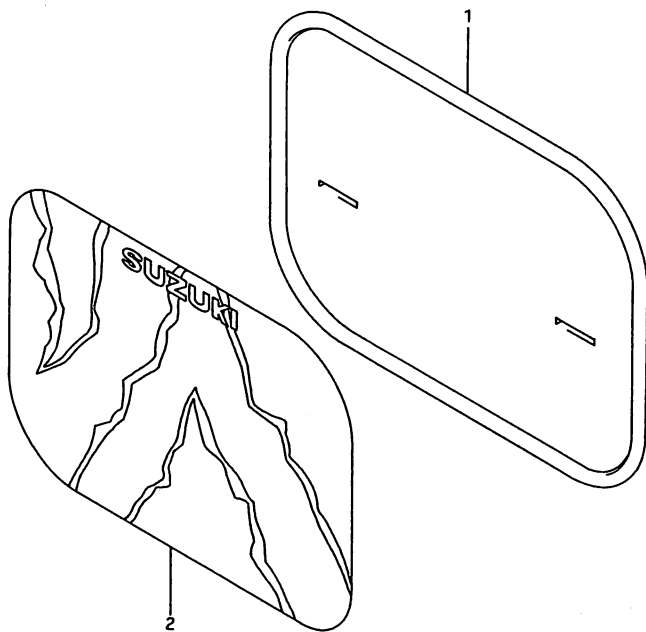
FIG.27 (G- 5) REAR WHEEL

REF.NO.	PART NO.	DESCRIPTION	Q'TY	REMARKS
25	09105-08008	BOLT	3	
26-1	08310-12088	NUT	3	model N/P
26-2	08310-00083	NUT	3	model R
27-1	08321-21088	LOCK WASHER	3	model N/P
27-2	09162-08008	LOCK WASHER	3	model R
28	64511-04411	SPROCKET, rear (NT:28)	1	
29	55100-04410	TIRE, rear (2.50-10)	1	
30	55200-04410	TUBE, inner	1	
31	55261-04410	PROTECTOR	1	
32	55300-04820	SPOKE SET	1	
33	55311-04410	RIM, wheel (1.4x10)	1	
34-1	01517-05258	BOLT	1	model P
34-2	01550-05253	BOLT	1	model R
35-1	08316-16058	NUT	1	model P
35-2	08316-10053	NUT	1	model R

FIG. 28

FIG.28 (G- 6) FRONT NUMBER PLATE

REF.NO.	PART NO.	DESCRIPTION	Q'TY	REMARKS
1-1	94911-04420-25Y	PLATE, front number (Yellow)	1	model N/P
1-2	94911-04420-30H	PLATE, front unumber (White)	1	model R
2	68725-04420-L61	EMBLEM, number plate	1	model N



4